

Storyteller

EITELJORG MUSEUM MAGAZINE

Eiteljorg Museum of
American Indians and Western Art
FALL 2025 – WINTER 2026



EITELJORG
CONTEMPORARY
ART FELLOWSHIP

EMERGING CURRENT

NOV 8, 2025-FEB 22, 2026

P2



**DÍA DE MUERTOS
COMMUNITY CELEBRATION**
OCT 25, 2025
P6

**CELEBRATING
ARTS AND CULTURES**
P5, P7, P15



**FIFTH THIRD BANK
JINGLE RAILS: THE GREAT
WESTERN ADVENTURE**
NOV 15, 2025-JAN 19, 2026
P8



Eiteljorg

Storyteller

Eiteljorg Museum Magazine

Winner of the **Pinnacle Award** for Best Magazine/Periodical from the Public Relations Society of America – Hoosier Chapter in 2021, 2022, 2024 and 2025, and winner of the PRSA's **Best of Show Award** for all public relations projects in 2023.

Volume 20, Number 3

President and CEO

Kathryn Haigh

Vice President for Advancement

Jamie Simek

Director of Communications and Marketing

Katie Warthan

Editor and Writer

Bryan Corbin

Design

Honeymoon Image & Design

Contributing Writers

Andrew Brown
Anna Grace Hargett
Madison Hincks
Kay Hinds
Alisa Nordholt-Dean
Monica Jo Raphael (Anishinaabe /
Sičáŋŋu Lakota)
Jamie Simek
Katie Warthan

Contributing Photographers

Eiteljorg Museum staff, archives and interns
Brittany Erwin Photography
Michael Durr
Zach Dobson
Alec Gray
Zibiwing Center for Anishinaabe Culture
and Lifeways
Minnie Wabanimkee
Photography by Olan
Native Pride Productions
John Hendricks

Printing

Fineline Printing Group

Editor's Note

Every effort is made to ensure that exhibition images published in *Storyteller* magazine accurately reflect the artworks on exhibit at the Eiteljorg Museum during the dates listed. Details of announced events, exhibitions and prices might change too late for the *Storyteller's* publication deadlines. For comments or questions, call 317.275.1315 or email bcorbin@eiteljorg.com.

Membership information

Contact abrown@eiteljorg.com or 317.275.1371



Eiteljorg Guide Linda Mills at the education cart showed a bison horn to a family visiting the museum.

Get involved with opportunities this fall and winter

Do you enjoy lifelong learning and sharing about the Eiteljorg with others? Consider becoming an Eiteljorg volunteer. Rewarding service opportunities are available for adults engaged in the community who can donate their time to work alongside museum staff and assist visitors.

Visit [Eiteljorg.org/volunteer](https://eiteljorg.org/volunteer) to learn more, and contact Rebecca Robinson at rrobinson@eiteljorg.com or 317.275.1325 with questions. Among the dates volunteers are needed most:

- Indigenous Peoples Day, Oct. 13
- Día de Muertos Community Celebration, Oct. 25
- Fifth Third Bank *Jingle Rails: The Great Western Adventure*, Nov. 15-Jan. 19
- MLK Day Community Celebration, Jan. 19, 2026

In addition to volunteers for guest services, special events, retail, development and gardening, the museum is recruiting a new class of volunteer Guides, who are specially trained to lead gallery tours and school groups and discuss educational items with visitors of all ages.

Guide training classes are delivered in a hybrid format from Oct. 20 through Feb. 16 with breaks during the holidays. Contact Alisa Nordholt-Dean at anordholt-dean@eiteljorg.com to learn about Guide classes.

Storyteller magazine wins top statewide PR award

The magazine you are reading, the Eiteljorg's *Storyteller*, won a statewide award for best periodical for the fifth year in a row. The Public Relations Society of America-Hoosier Chapter held its annual Pinnacle Awards on June 12. PRSA presents awards in several categories to recognize top achievements in Indiana's public relations industry. In the contest — judged by the PRSA chapter in Kentucky — the Eiteljorg competed alongside big PR firms, other nonprofits and universities.

The three issues of *Storyteller* from 2024 received the top honor in the magazine-periodicals category, the Pinnacle Award, which recognizes quality of writing and visuals, editorial judgment and effectiveness in messaging. Judges' comments: "This was a well-researched, executed and evaluated project."

The *Storyteller* team recognized for the 2024 issues included editor Bryan Corbin, graphic designer Mike Fasig of Honeymoon Image & Design, and director of communications and marketing Katie Warthan. Also recognized were past marketing employees Bert Beiswanger and Brooke Sullivan. This prestigious award is a reflection of the effort that goes into *Storyteller* magazine, directly or indirectly, from staff across the museum.

The three award-winning issues are at this link, [Eiteljorg.org/storyteller-magazine](https://eiteljorg.org/storyteller-magazine), including the Fall 2024 issue that had a special memorial section about the late John Vanausdall, the museum's former President and CEO.



On the front cover:

Jean LaMarr (Northern Paiute / Achomawi [Pit River]), *Untitled (Cover Girl)*, 1988, offset lithograph on paper, 21 1/4 x 30 inches. Gift of Joe Feddersen. 2017.20.4

Catrina Parade at the 2024 Día de Muertos Community Celebration

Fifth Third Bank *Jingle Rails: The Great Western Adventure*. Image by Michael Durr.

Eiteljorg thrives on the connections we share

Dear Readers:

This summer, I had the privilege of returning to Santa Fe for my third Santa Fe Indian Market, organized by the Southwestern Association for Indian Arts (SWAIA). Each year, our team makes a journey to connect with artists, collectors, dealers and colleagues from across the country. While the Eiteljorg is well known for its deep relationships with artists and other art and culture organizations, this year felt different for me. Walking through the bustling market, I found myself waving to old friends while also meeting new ones, each encounter a reminder that our museum is one of the few places in the nation where the threads of our shared histories are woven together in such visible and meaningful ways.

The intersections of art, histories and cultures we explore through our exhibitions and programs are unmistakable. This is evident in the art we

experience every day at the Eiteljorg Museum. Whether it is a painting inspired by a historic event or a contemporary work rooted in ancestral traditions, the past is ever-present in what artists are creating today. It is a continuous line, stretching across generations, which connects us all if we choose to look closely.

This same theme of continuity and evolution was clear at the Eiteljorg Indian Market & Festival on June 28-29, which featured some exciting changes. We unveiled a fresh new logo by Native designer Victor Pascual (Diné / Mayan). Thirty new artists joined the market, and food and beverage offerings were expanded. The market felt more vigorous, reminding me of what we aspire to at every Eiteljorg program: honoring tradition while creating fresh, memorable experiences for artists and guests alike.

You can see this same balance of tradition and innovation in our programs throughout the year. At this year's 20th annual *Quest for the West*® Art Show and Sale, where artists sold a record \$1.32 million in art, we welcomed several new artists. Some, such as Z.S. Liang, depict historical views of the West. The works of two contemporary Native artists, Preston Singletary (Tlingit) and Starr Hardridge (Muscogee / Creek), blur the boundaries of "Western" or "Native" art. And, *Emerging Current: Eiteljorg Contemporary Art Fellowship 2025*, will highlight some of the most important contemporary Native artists working today.

These programs not only celebrate the rich history of art of our past and present, but they also ensure the next generation of collectors and supporters experience the



During the 20th annual *Quest for the West*® Art Show and Sale, Sept. 5-6, The Western Art Society presented the Harrison Eiteljorg Purchase Award to artist Sean Michael Chavez for *Rebeldes Look (Noche)*. The painting joins the museum's collection. Left to right: Eiteljorg President and CEO Kathryn Haigh, Western Art Society President David Found, *Quest for the West*® Chair Cathy Turner, and artist Sean Michael Chavez.

Image courtesy of Brittany Erwin Photography

full spectrum of perspectives shaping the art world today.

We recently received an unexpected, extraordinary estate gift for acquisitions, giving our curators the ability to strengthen the museum's collection by filling in threads that may have been missing from the stories we tell. This will be especially powerful as we prepare for the reinstallation of the museum's Art of the American West galleries. Visitors can look forward to seeing works by celebrated artists such as Ed Mell and T.C. Cannon, as well as a newly commissioned mural in the Eagle Commons to be unveiled at a later date. This exciting addition will embody perspectives from the past and the present that are so central to the Eiteljorg experience.

There is much more ahead. We recently welcomed a new associate curator of Western art, Bryn Foreman, who will partner with our team to reimagine the galleries and shape the next chapter of our story. Also, Leah Ollie, our new grants coordinator, will support the museum through finding foundation support for

new initiatives. On Dec. 13, we will open a special exhibition in the Paul Gallery titled *Gaawii Eta-Go Aawizinoo Gaawiye Mkakoons: It's Not Just A Quillbox*, an extraordinary project made possible by generous funding through the Michigan Traditional Arts Program at Michigan State University. Those who enjoyed *Radical Stitch* last spring will find this new show very intriguing. Amid shifts in federal and state funding, our commitment to present programs and exhibitions that build on our tradition and lead us forward endures.

Just as a thread ties together the past and present, the Eiteljorg thrives on the connections we share with our members, supporters, volunteers, and staff. You make it possible for us to preserve history, celebrate creativity, and foster new experiences. Together, we continue to weave a story that is uniquely ours and yet belongs to everyone.

Kathryn Haigh
President and CEO



Sean Michael Chavez (b. 1971)
Rebeldes Look (Noche), 2025
Oil on canvas, 40 x 30 inches
2025 *Quest for the West*® Harrison
Eiteljorg Purchase Award
Presented by the Western Art Society

See all the 2025 *Quest for the West*® award-winning artworks at quest.eiteljorg.org.



SPECTACULAR AND INNOVATIVE: EXPERIENCE THE BOLD ENERGY OF THE 2025 EITELJORG FELLOWS

This fall and winter, the Eiteljorg Museum invites you to step into a world of impressive creativity and artistic genius. **Emerging Current: Eiteljorg Contemporary Art Fellowship 2025** opens Nov. 8 and continues through Feb. 22, bringing together the works of five extraordinary artists.

The Fellowship exhibition is a riveting mix of paintings, prints, sculptures, carvings, installations and assemblages. Each piece is a window into the artist's unique vision, shaped by life experiences and cultural perspectives from Native communities across North America. As you make your way through the

exhibition, you will find yourself drawn into works that spark curiosity, encourage reflection and leave you wondering about the stories and inspirations behind them. Thoughtful panels featuring the artists' own words will deepen your connection to the art and to the creative minds who made it.

The exhibition is one component of this round of the internationally renowned Eiteljorg Contemporary Art Fellowship (ECAF). Every other year since 1999, the museum has selected a new group of five artists in the contemporary Native art field as Fellows; four are chosen by an independent jury and one is

(Left) **Jean LaMarr** (Northern Paiute / Achomawi [Pit River])

Seven from Hell (Columbus, the Priest, the Harlot, the Pimp, the Murderer, the Thief and Satan) #6, 1991

Hand-colored etching on three large pieces of paper, found shoes, paint, and board

Museum purchase from the Eiteljorg Contemporary Art Fellowship



(Right) **Cannupa Hanska Luger** (Mandan / Hidatsa / Arikara / Lakota)

Water as Remarkable Landscape (from the series "Future Ancestral Technologies"), 2025

Eight-color lithograph ed. of 7
38 x 26 inches

Loan courtesy of the Artist and Garth Greenan Gallery, NY



Maria Hupfield (Anishinaabek, Wasauksing First Nation)

After Alpha Alternative (Revisited): Starburst, 2016–2022

Colored felt, 18 x 18 inches

Loan courtesy of the artist and Patel Brown, photo courtesy of Darren Rigo

invited based on a lifetime of work. The museum organizes an exhibition of their art, publishes an art catalog and holds public events to celebrate the artists. This year, the museum awards unrestricted grants of \$50,000 to each Fellow and purchases artwork from each to add to its permanent collection.

"What makes the Eiteljorg Contemporary Art Fellowship exhibition so exciting is the chance to engage with contemporary art that is daring, unpredictable and innovative," Eiteljorg President and CEO Kathryn Haigh said. "These works stay with you — challenging your thinking and sparking conversations well beyond the galleries."

Continued on page 4



Erin Ggaadimits Ivalu Gingrich

(Koyukon Dené / Iñupiaq)

Spawning Iqalukpik Double from Kasilof River, 2022

Basswood, acrylic paint, glass beads, and salmon vertebrae
50 x 20 x 2½ inches

Museum purchase from the Eiteljorg Contemporary Art Fellowship



John Feodorov (Navajo [Diné])

Emergence #7, 2013

Acrylic on unstretched canvas, 63½ x 72 inches

Museum purchase from the Eiteljorg Contemporary Art Fellowship

Continued from page 3

Celebrating the Fellows at the Eiteljorg

"Whether you are a seasoned contemporary art aficionado or experiencing contemporary Native art for the first time, the Eiteljorg Contemporary Art Fellowship exhibition is a wonderful opportunity to learn about our 2025 Eiteljorg Contemporary Art Fellows, and appreciate their incredibly talented visions and voices," said Dorene Red Cloud (Oglala Lakota), curator of Native American art and curator of ECAF.

The 2025 round of the Fellowship, titled **Emerging Current**, coincides with an annual academic conference, the Native American Art Studies Association in Indianapolis Nov. 5-7. The museum will host some NAASA events for scholars in the Native art field.

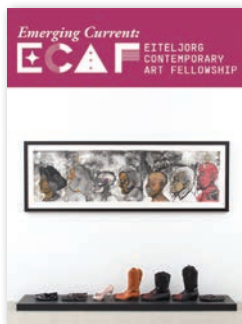
The general public can meet the 2025 Fellows at these events:

- **3 p.m. Thursday Nov. 6:** A talk by Erin Ggaadimits Ivalu Gingrich in the Basile Auditorium of the Herron School of Art + Design, 735 W. New York St., Indianapolis.
- **6 p.m. to 9 p.m. Friday Nov. 7:** Exhibition Preview, Artist Awards and Celebration at the Eiteljorg Museum. Reservations required; visit [Eiteljorg.org/events](https://eiteljorg.org/events) to register. The evening's entertainment includes DJ Kehiw (Tsuut'ina, Cree, Northern Paiute) and emcee Casey Brown (Ho-Chunk).
- **11 a.m. to 12:30 p.m. Saturday Nov. 8:** Public tour of the ECAF exhibition, led by the Fellows; included with regular museum admission. Visit this [link](#).

To learn more about the 2025 Fellows, this year's events and ECAF generally, visit contemporaryartfellowship.eiteljorg.org. *Emerging Current* is open daily through Feb. 22, meaning Eiteljorg visitors can see it along with the museum's other exhibitions and programs. For a deep dive into the Fellows' careers and biographies, purchase a copy of the art catalog, *Emerging Current: Eiteljorg Contemporary Art Fellowship 2025*, featuring essays by experts in the field of contemporary Native art. It is available in the Eiteljorg Museum Store.

This year, the Eiteljorg also is unveiling the new ECAF logo, created by graphic artist Victor Pascual (Diné / Mayan) of Digital Navajo.

The Eiteljorg Contemporary Art Fellowship is made possible by Lilly Endowment Inc. Generous support has also been provided by Avis Foundation as well as the Efroymsen Family Fund (a Central Indiana Community Foundation Fund).



EMERGING CURRENT: EITELJORG CONTEMPORARY ART FELLOWSHIP 2025

NOV 8, 2025–FEB 22, 2026

Special Exhibitions Gallery

MADE POSSIBLE BY:



Lilly Endowment Inc.
A private foundation since 1937

SPONSORED BY:



**EFROYMSON
FAMILY FUND**
A CIOF FUND



MEET THE 2025 EITELJORG FELLOWS

Invited artist **Jean LaMarr**

(Northern Paiute / Achomawi [Pit River]) of Susanville Indian Rancheria, California, works in printmaking, painting, murals and installations. LaMarr's art challenges stereotypes and misrepresentations of Native women and peoples, exposes environmental racism in her homelands and features elements of her cultural traditions.



Image by Susan Mantle

John Feodorov (Navajo [Diné])

of Seattle, Washington, explores identity and the effects of being an urban Indian in his paintings, drawings, 3-D artworks and video performances. He is retiring after 20 years as an associate professor of art from Western Washington University.



Erin Ggaadimits Ivalu

Gingrich (Koyukon Dené / Iñupiaq) of Anchorage, Alaska, draws inspiration from her heritage in creating carved, painted and beaded sculptures and mask forms. Her art also includes photography, film, installation, poems and design, honoring her Native Alaskan ancestral homelands.



Maria Hupfield (Anishinaabek,

Wasauksing First Nation) of Toronto, Canada, merges performance art, design and sculpture — drawing from Indigenous storytelling traditions through art, scholarship, collaboration and social justice. Hupfield is on the faculty of the University of Toronto.



Image courtesy of Grégore Féron

Cannupa Hanska Luger

(Mandan / Hidatsa / Arikara / Lakota) of Glorieta, New Mexico, is a multidisciplinary artist creating monumental installations, sculpture and performance to communicate urgent stories of 21st century Indigeneity. Luger's bold visual storytelling presents new ways of seeing our collective humanity while bringing an Indigenous worldview to the foreground.

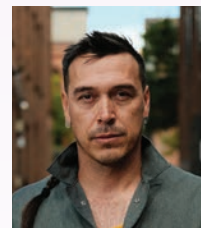


Image courtesy of Gabriel Fernin

EXCITING FALL PUBLIC PROGRAMS SHARE ARTS AND CULTURES

By Madison Hincks, public programs manager

Join us this fall at the Eiteljorg Museum for a compelling lineup of dynamic programming and events. On Oct. 13, we host our annual Indigenous Peoples Day Celebration with free admission, performances, curator-led tours and art activities. The event is in partnership with the Indiana Native American Indian Affairs Commission.

Indigenous Peoples Day seeks to recognize and honor all those peoples who have called North America / Turtle Island home for millennia. What started as an educational opportunity at the Eiteljorg a few short years ago has grown into an annual tradition that includes free museum admission and a full day of programming. We are pleased to present the entertainment lineup for 2025.

Native Pride Productions, an award-winning dance collective led by founder and artistic director Larry Yazzie (Meskwaki), will tell stories and showcase several types of powwow dances throughout the day, including Fancy Dance, Grass Dance, Jingle Dress dances and more. Yazzie's declaration that "we are all united; one earth, same ground" is the foundation of this year's celebration, so watch for this theme to play out in programs and activities throughout the day.

Learn about connections to and within Native art by joining one or both gallery tours, led by **Dorene Red Cloud** (Oglala Lakota), curator of Native American art, and **Monica Jo Raphael** (Anishinaabe / Sičąŋǵu Lakota), Hoback curator of Great Lakes Native art, cultures and community engagement, will lead one of the gallery tours on Indigenous Peoples Day.



Larry Yazzie (Meskwaki) of Native Pride Productions



Monica Jo Raphael (Anishinaabe / Sičąŋǵu Lakota), Hoback curator of Great Lakes Native art, cultures and community engagement, will lead one of the gallery tours on Indigenous Peoples Day.

INDIGENOUS PEOPLES DAY CELEBRATION SPONSORED BY:



Artist in Residence David Martin (Potawatomi)
Image by John Hendricks

MEET THE ARTIST IN RESIDENCE

Be sure to return to the Eiteljorg in November, Native American Heritage Month, as we host another artist in residence, **David Martin** (Pokagon Band of Potawatomi). David is a tattoo artist from South Bend who also works in graphite and oil paint. He focuses on how his art will affect his culture positively.

David has been a singer, dancer, and artist since childhood, encouraged by family members to pursue different art mediums. His goal is to "honor and respect Potawatomi culture and spirituality from the past without re-enacting it." A past artist in residence at the University of Notre Dame, David has had his work showcased at the South Bend Museum of Art, the Snite Museum of Art and the Indiana Statehouse. He regularly participates in the Eiteljorg Museum Indian Market & Festival and the Santa Fe Indian Market.

During his residency at the Eiteljorg, David will engage with groups of all ages both at the museum and in the local community. You can meet him during the museum's inaugural Homeschool Day on Nov. 18, giving a presentation at the Indianapolis Public Library's Haughville Branch on Nov. 21, or during any of his open studios sessions at the Eiteljorg, 1-4 p.m. Nov. 22, 26, 28 and 29.

Sign up today for a hand drum workshop on Nov. 22, and learn about hand drums as David walks you through the steps to make your own. On Nov. 28 and 29, watch as David demonstrates a powwow dance and painting techniques. Young art aficionados have an exclusive opportunity to learn from David during his graphite drawing workshop for kids on Nov. 29.

ARTIST IN RESIDENCE PROGRAMS SPONSORED BY:

Drs. Susan and Robert Stephens Artist in Residence Fund

For more information and ticket links, see pages 10-11, visit [Eiteljorg.org/events](https://eiteljorg.org/events) or email museumprograms@eiteljorg.com.



Día de Muertos brings a festive mix of music, dance and art

By Alisa Nordholt-Dean, vice president for public programs and Beeler family director of education

This fall, the Eiteljorg Museum invites you to experience the beauty, traditions and artistry of Día de Muertos (Day of the Dead). From Oct. 10–Nov. 2, the museum hosts the annual Día de Muertos Community Art and Altar Exhibition. On Saturday Oct. 25, the museum hosts the free Día de Muertos Community Celebration.



Each October, the museum's Ruth Lilly Community Gallery is transformed into a vibrant yet contemplative space filled with beautiful artwork and colorful, intricately decorated ofrendas (altars). Lovingly created by local artists and community partners including the Consulado de México en Indianápolis and Metzli Cultural, these ofrendas honor the memories of departed loved ones and share holiday traditions with museum visitors.

This year's featured artist is Jesus (Chuy) Sanchez, Jr., a digital and traditional



artist based in Indianapolis. Deeply influenced by the intersection of the sacred and the everyday, Sanchez weaves religion, family photographs, life studies and pop culture references into his work. His art evokes strong emotions and encourages reflection on identity, belonging and nostalgia.

Returning artist Fernando Lozano, creator of the *We Remember / Nosotros Recordamos* exhibition of 2023, will design and install the community ofrenda. Visitors are invited to contribute to this collaborative artwork by leaving written messages to remember and honor their departed loved ones. The exhibition is open and free to visit during regular museum hours from Oct. 10 through Nov. 2.

Free celebration includes performances

The celebration continues with one of the museum's most anticipated events of the year: the Día de Muertos Community Celebration on

Oct. 25. Conceived more than a decade ago with partners Nopal Cultural and Arte Mexicano en Indiana, the free festival has grown into one of Indianapolis' largest Día de Muertos gatherings, attracting thousands of visitors each year. Locally, as around North America and Central America, people celebrate Día de Muertos — with its festive mix of Indigenous and Spanish languages, cultures, foods and customs — to remember loved ones who have passed on.

The day begins with student performances from Global Prep Academy and Monarca Academy. In the afternoon, the stage comes alive with a robust lineup of music and

dance, including a Mariachi band, talented dance groups Grupo Folclórico Macehuani and Ballet Folklórico Mosaicos, and Chicago-based band Huracán.

One of the festival's most beloved traditions is the Desfile de Catrinas (Catrina Parade), presented by Mujeres Conectadas. Elegantly dressed Catrinas and Catrins, adorned in festive attire, will parade through the museum's main hall and outdoor performance area. Don't miss your chance to snap a selfie with your favorites after the procession.

The celebration also features a bustling mercado (marketplace) offering pan de muertos (bread of the dead), calaveras de azúcar (sugar skulls), cempechúchil (marigolds), sweets, jewelry and one-of-a-kind works of art. Visitors can meet artists, engage with community partners and create a variety of arts and crafts to take home. Multiple selfie stations will be located throughout the festival, including the impressive outdoor ofrenda created by Ballet Folklórico Mosaicos. Food will be available both in the museum café and from local food trucks.

Admission to the festival is free, and museum hours are extended until 7 p.m. on Oct. 25. Don't miss this opportunity to celebrate the intersection of art, cultures, and community at the Eiteljorg Museum's Día de Muertos events.



DÍA DE MUERTOS COMMUNITY CELEBRATION

SATURDAY

OCT 25

10 a.m.-7 p.m.

FREE ADMISSION

PRESENTED BY:

**ARTE
MEXICANO
EN INDIANA**



COMMUNITY ART AND ALTAR EXHIBIT

OCT 10-NOV 2

Ruth Lilly Community Gallery

Eiteljorg.org/dia-de-muertos



At this QR code, link to a Spanish translation of this article on the Eiteljorg Blog.

Learn about amazing quill art and the language of its artists in a new exhibition

One of the earliest forms of decorative art practiced in North America is quillwork. Native artists of the Great Lakes region specialize in using porcupine quills, sweetgrass and birch bark to create dazzling embroidered quill boxes and art featuring designs inspired by woodland floral and fauna, including vibrant geometric designs.

At a traveling exhibition coming to the Eiteljorg, you can experience more than 90 quilled artworks and learn about the artists who meticulously made them. *Gaawii Eta-Go Aawizinoo Gaawiye Mkakoons: It's Not Just A Quillbox* opens on Dec. 13 and continues through March 29.

Not only does the exhibition honor a regional Indigenous art form, it celebrates Anishinabemowin, the spoken language of the Odawa (Ottawa), Anishinaabe or Anishinaabek (Chippewa), and Potawatomi peoples whose original homelands are in the Great Lakes region. Despite two centuries of government policies, colonization and the nation's boarding school

infrastructure — an educational system originally designed to assimilate Indigenous peoples and destroy Native cultures — the language has survived and is still spoken by Anishinabek peoples. To underscore its resiliency, bilingual exhibition panels are printed in Anishinabemowin, followed by English translations.

The exhibition features pieces by today's quillwork artists or those within living memory, along with stories of their ancestors whose knowledge has been passed down through generations. Within the exhibition, you can learn about the cultural importance of porcupine quill art to Anishinabek peoples and be inspired by the creativity of each artist.

"The exhibition highlights the intricate relationships between teachers and learners, the deep connection between the art and natural resources and the challenges of preserving this tradition in the modern world," the Ziibiwing Center for Anishinaabe Culture and Lifeways announced when it launched the traveling exhibition in 2024.



*Nswi-minidook /
Three Shamans*

Carl Beam (Anishinabek), gaa-segaajigaadang gijeying / designer of top
M'Chigeeng First Nation, Mnidoo Mnising, Ontario / West Bay, Manitoulin Island, Ontario

Maime Migwans (Anishinabek), Gaa-zhitoot mkakoons / maker of box
M'Chigeeng First Nation, Mnidoo Mnising, Ontario / West Bay, Manitoulin Island, Ontario

Image by Minnie Wabanimkee

Intricate process highlighted

Long before European colonial settlers introduced the trade in glass beads into North America, porcupine quills were the medium Native artists used to adorn baskets and clothing with decorative designs. Quill art remains a powerful art form to this day. The exhibition discusses how quillwork artists obtain their materials during certain seasons: gathering sweetgrass, collecting strips of bark from birch trees, harvesting the sharp quills from porcupines, adding color to the quills with hand-made natural plant dyes, and intricately weaving and sewing them together.

You will enjoy learning about the process from award-winning quill-and-beadwork artist Monica Jo Raphael (Anishinaabe / Sičáŋǵu Lakota), the Thomas G. and Susan C. Hoback curator of Great Lakes Native art, cultures and community engagement at the Eiteljorg, whose work is in the exhibit. As an enrolled citizen of the Grand Traverse Band of Ottawa and Chippewa Indians from Suttons Bay, Michigan, Monica has created many

quillwork pieces that are featured in museums. Having worked with the organizers of *Gaawii Eta-Go Aawizinoo Gaawiye Mkakoons: It's Not Just A Quillbox* to bring the traveling exhibition to Indianapolis, Monica is curating its Eiteljorg stop. She will hold a quill-art-making demonstration for visitors during opening-day events Dec. 13. See page 12 for details of exhibit events.

The traveling exhibition is organized by the Ziibiwing Center for Anishinaabe Culture and Lifeways in Mt. Pleasant, Michigan; the Michigan Traditional Arts Program; the MSU Office of University Outreach and Engagement; and the Michigan State University Museum.

**GAAWII ETA-GO
AAWIZINOO GAAWIYE
MKAKOONS:
IT'S NOT JUST A
QUILLBOX
DEC 13, 2025-
MAR 29, 2026**



Installation view of intricately quilled birchbark containers at the Ziibiwing Center.
Image by Minnie Wabanimkee

ENCHANTING MODEL TRAINS RAMBLE PAST THE RAILROAD CROSSING OF *JINGLE RAILS* AND ROUTE 66

By Katie Warthan, director of communications and marketing



Zach Dobson Photography

All aboard for holiday fun! For 16 years, the Fifth Third Bank *Jingle Rails: The Great Western Adventure* has been one of Indy's most beloved holiday traditions, and this year's journey is bigger, brighter and more nostalgic than ever.

This charming model railroad display, which opens Nov. 15, features eight G-scale electric trains chugging along more than 1,200 feet of track. Visitors young and young at heart will be enchanted as the trains wind through miniature versions of the Indianapolis skyline, the awe-inspiring national parks, and famous landmarks of the American West. Each scene is crafted from natural materials such as bark, pinecones and twigs, turning every trestle, tunnel and building into a work of art.

Making a triumphant return this year is the Route 66 scene, last seen in *Jingle Rails* in 2018. Families can relive the

golden days of America's most celebrated highway, with favorite pit stops such as the Gateway Arch in St. Louis and the Santa Monica Pier. It's a nostalgic ride down memory lane that captures the adventurous spirit of the open road.

"We are thrilled to bring back the iconic Route 66 scene for guests who love exploring the sights and sounds of *Jingle Rails*. It is a delight to watch people of all ages connect through an experience they can't get anywhere else," Eiteljorg Festivals Manager Conner Richberg (Mohawk, Turtle Clan) said.

When you visit *Jingle Rails*, the journey begins in a miniature downtown Indianapolis, where you'll spot replicas of familiar landmarks such as the Eiteljorg Museum, the Madam Walker Theatre, Lucas Oil Stadium and Monument Circle, complete with a sparkling holiday tree adorning the Soldiers and Sailors Monument. From there, miniature trains

whisk you westward to the Grand Canyon, Yellowstone, Yosemite, Glacier National Park and Mesa Verde, along with other highlights of the West such as the Hoover Dam, Golden Gate Bridge and dazzling Las Vegas Strip.

Holiday activities return

And the fun doesn't stop there. Guests can take on a seek-and-find challenge, hunting for hidden treasures tucked into each scene. Whether you're a lifelong train enthusiast or just love the wonder of the holidays, *Jingle Rails* is sure to become a favorite part of your family's traditions. Don't miss the large inflatable train on the museum's front lawn.

Plan to make a day of it at the Eiteljorg with select extended hours and special events throughout the season. On Thanksgiving weekend, the museum will be open Friday and Saturday, Nov. 28–29, with a Winter Art Market Nov. 29 featuring



Image courtesy of Michael Durr



Applied Imagination Ltd. designed and built the *Jingle Rails* model railroad, including the Route 66 scene.



Image courtesy of Michael Durr



Image courtesy of Michael Durr

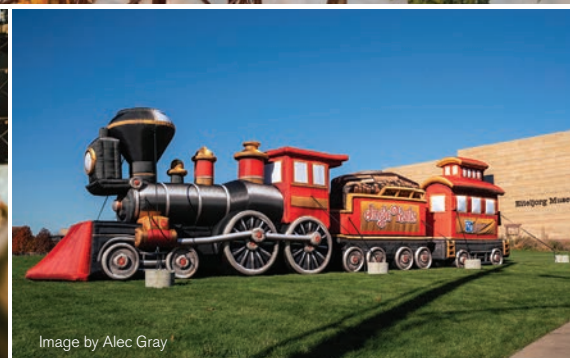


Image by Alec Gray

Native artists from the recent Indian Market & Festival. Additional Winter Art Market dates are Dec. 13 and 20, both featuring Indiana artists and vendors who will sell unique handmade gifts. On Dec. 14, the museum will host a Sensory Morning with reduced lights and sound effects for a more relaxed experience.

Kids can explore hands-on interactive exhibits inside *Jingle Rails*. After your journey through the model railroad, stop by the family discovery area, the R.B. Annis Western Family Experience on the canal level.

Jingle Rails is included with museum admission, so grab discounted advance tickets and look for extended hours on our website, Eiteljorg.org/JingleRails. Admission is free for museum members and children ages 4 and under.

The Eiteljorg is grateful to the group of model railroad enthusiasts who work in the display and maintain the trains,

and other museum volunteers who make *Jingle Rails* special for everyone who visits. If you would like to volunteer to help with *Jingle Rails*, contact volunteers@eiteljorg.com.

Get ready to explore the model railroad and create holiday memories that will last a lifetime! For additional details, see the Calendar of Events on page 12.

JINGLE RAILS EXTENDED HOURS

Jingle Rails and the rest of the Eiteljorg will be open until 7 p.m. on the following dates:

Saturday & Sunday, Dec. 13 & 14
Thursday–Sunday, Dec. 18, 19, 20 & 21
Friday–Sunday, Dec. 26, 27 & 28

DESIGNED AND BUILT BY: **APPLIED IMAGINATION**

Eiteljorg.org/JingleRails



FIFTH THIRD BANK
JINGLE RAILS: THE GREAT WESTERN ADVENTURE
NOV 15, 2025-JAN 19, 2026

PRESENTED BY: **FIFTH THIRD BANK**

ADDITIONAL SUPPORT PROVIDED BY: **ksm** CPAs & Advisors **Barnes & Thornburg**

The Butler Family Foundation Endowed *Jingle Rails* Fund
Stuart's Household Furniture Moving and Storage Inc.

Calendar

Calendar of Events compiled by Anna Grace Hargett

NOTE TO VISITORS: The events, dates, times and prices listed here were in effect at the time of publication. At different times, an individual gallery may be temporarily closed for updates. Please check Eiteljorg.org before your visit for the most up-to-date information on exhibits and activities at the museum on the day of your visit and to register for programs.



Monday

OCT 13

10 a.m.–5 p.m.

Indigenous Peoples Day

The Eiteljorg invites you to celebrate Indigenous Peoples Day with FREE admission. Enjoy cultural performances by Native Pride Productions and curator-led gallery tours. See page 5 and visit Eiteljorg.org/indigenous-peoples-day for more details.

Tuesday

OCT 28

6–8 p.m.

Author talk with Tim Carpenter

Retired FBI agent Tim Carpenter led the bureau's Art Crimes Team investigation into one of the most prolific art thieves in history: an Indiana man who systematically looted thousands of cultural objects and ancestral remains from burial sites and graves around the world. Carpenter has written a memoir about investigating the case, *The Grave Robber*. After discussing this amazing true story, Carpenter will sign copies of his new book. Seating is limited; visit Eiteljorg.org/events to register.

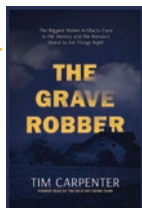


Image courtesy of Harper Horizon

DÍA DE MUERTOS

Saturday, 10 a.m.–7 p.m.

OCT 25

Día de Muertos Community Celebration

Experience Día de Muertos (Day of the Dead) at the Eiteljorg. Learn the history behind the holiday, watch music and dance performances, explore artwork, support local artists and create art. Admission is FREE that day. See page 6 and visit Eiteljorg.org/dia-de-muertos.



PRESENTED BY: **ARTE MEXICANO EN INDIANA**

ADDITIONAL DÍA DE MUERTOS SPONSORS LISTED ON PAGE 6

OCT 10–NOV 2

Día de Muertos Community Art and Altar Exhibit

This exhibit in the Ruth Lilly Community Gallery features ornate ofrendas, or altars, created by local organizations and artists to honor and celebrate deceased loved ones. Spend time with these artworks and add a note for your own departed loved one to the community ofrenda. Open and free to visit during regular museum hours.



NATIVE AMERICAN HERITAGE MONTH

Thursday

NOV 13

10 a.m.–1 p.m.

Native American Heritage Day for Grades K-12

Eiteljorg is partnering with the Indiana State Museum and Indiana Native American Indian Affairs Commission to present a special day of learning and exploring Native Americans' continued impact in the community, Indiana and beyond. Event takes place at Indiana State Museum. Visit Eiteljorg.org/events.

Tuesday, 10 a.m.–Noon

NOV 18

Homeschool Day Program

Create art, meet David Martin and explore the galleries. Register at Eiteljorg.org/events.

NOV 22, 26, 28 & 29

Open studio hours: 1–4 p.m.

Artist in Residence: David Martin

Meet David Martin at the museum during his open studio hours and at art-making events. David focuses on how his art will affect his culture positively. See page 5 and visit Eiteljorg.org/events.

Saturday, 10 a.m.–Noon

NOV 22

Hand Drum Workshop with David Martin

Learn how to make your own hand drum. All skill levels welcome, all materials provided. Register at Eiteljorg.org/events.



David Martin
(Pokagon Band of Potawatomi) of South Bend

We're adding new programs and events all the time. Visit Eiteljorg.org and sign up for our e-newsletter to stay up to date on museum happenings. To purchase online tickets, visit Eiteljorg.org. Call 317.636.9378 for more information. All events are included with general admission unless otherwise noted. General admission is \$20 for adults, \$16 for seniors 65 and over, and \$12 for youth ages 5 to 17. Students from Indiana colleges and universities have free admission if they present student ID. Children ages 4 and under are free. Museum members enjoy free admission, unless otherwise noted. Native American and First Nations visitors with tribal ID or proof of enrollment have free admission.

EXHIBITION OPENING



NOV 8–FEB 22

Emerging Current: Eiteljorg Contemporary Art Fellowship 2025

The Eiteljorg has recognized and celebrated contemporary Native art since 1999. This year's ECAF exhibition, *Emerging Current*, brings together five artists' trail-blazing work in the disciplines of painting, printing, installation, sculpture, video and assemblage. See page 2, and visit:

contemporaryartfellowship.eiteljorg.org

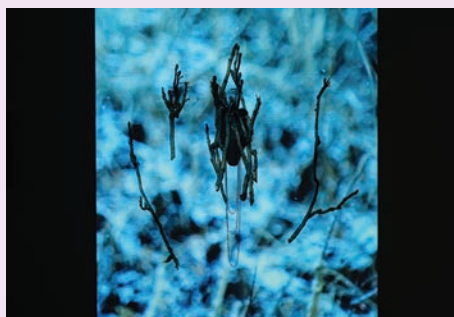
Thursday

NOV 6

3 p.m.

Artist Lecture

Join us in the Basile Auditorium of the Herron School of Art + Design, 735 W. New York St., Indianapolis, for a talk by one of this year's Fellows, Erin Ggaadimits Ivalu Gingrich (Koyukon Dené / Iñupiaq). Visit this [link](#).



Erin Ggaadimits Ivalu Gingrich
(Koyukon Dené / Iñupiaq)
Ayau pimaqtuun, 2024
Carved basswood, black
gesso, glass beads, devil's
club, projected film
Museum Purchase from the Eiteljorg
Contemporary Art Fellowship

Friday

NOV 7

6–9 p.m.

Exhibition Preview, Artist Awards and Celebration

Join us as we honor the five Eiteljorg Contemporary Art Fellowship artists for 2025. Reservations required; tickets are \$30 for adults, \$25 for Eiteljorg and NAASA members, and \$15 for students. Visit Eiteljorg.org/events.

Saturday

NOV 8

11 a.m.–12:30 p.m.

Public Tour

Enjoy a public gallery tour led by ECAF artists of the *Emerging Current* exhibition; included with regular admission. Meet the Fellows and gain insight into their art practices as they discuss their works. Visit this [link](#).

MADE POSSIBLE BY:



Lilly Endowment Inc.
A private foundation since 1937

SPONSORED BY:



EFROYMSON
FAMILY FUND
A CIBC FUND



Tuesday

NOV 25

10–11 a.m.

Members-Only Coffee & Conversation with David Martin

Register to meet the artist at membership@eiteljorg.com or at this [link](#).

1–2 p.m.

Virtual Artist Talk

Can't make it to the museum to meet the artist in residence in person? Join a virtual artist talk. Register at: tinyurl.com/bm7ufwvd

Friday, 11 a.m.

NOV 28

Dance Performance by David Martin

Watch as David demonstrates a powwow dance. Visit Eiteljorg.org/events.

Saturday, 10–11:30 a.m.

NOV 29

Eiteljorg Kids Graphite Drawing with David Martin

For more details of this event open to all children, visit Eiteljorg.org/events. Eiteljorg Kids Members receive a discount.

NOV 15–DEC 11

Toy Drive: Toys for Turtle Mountain

Donations of new toys for children of all ages are sought for the annual toy drive to benefit kids at the Turtle Mountain Band of Chippewa Indians Reservation in Belcourt, North Dakota. Also sought: monetary donations to cover transportation costs. Donations can be dropped off at the museum's main entrance Nov. 15–Dec. 11. For questions, contact anordholt-dean@eiteljorg.com or 317.275.1319.

EXHIBITION OPENING

DEC 5–JAN 31
LAMP: De Aquí y De Allá
(DAYDA)

Join us for an exhibition of works by artists in the Latino Artist Mentorship Program (LAMP) that focuses on what it means for artists to be "De Aquí" (from here) and "De Allá" (from their native country). The exhibition in the museum's Ruth Lilly Community Gallery is free.

See page 12 for additional Thanksgiving Weekend activities at the museum.

Continued from page 11

JINGLE RAILS

NOV 15–JAN 19

Fifth Third Bank *Jingle Rails: The Great Western Adventure*

The Eiteljorg's holiday model train experience returns for its 16th year. Electric trains ramble through replicas of the skyline of downtown Indianapolis and landmarks of the American West, with each backdrop crafted out of all-natural materials. Returning this year: the Route 66 scene. See page 8, and visit Eiteljorg.org/JingleRails for advance discounted tickets.

Saturday, 8:30–10 a.m.

NOV 15

Members-Only First Look at *Jingle Rails*

Join us for our annual members-only first look at an Indy holiday favorite. Register at Eiteljorg.org/events.

Thanksgiving Weekend Programming:

Friday and Saturday

NOV 28 & 29

Artist in Residence events: see pages 11–12.

Saturday, 10 a.m.–4 p.m.

NOV 29

Winter Art Market

During the opening Winter Art Market of the season, meet Native artists from Indian Market & Festival, shop for holiday gifts, watch demonstrations and create your own artwork to take home. Visit Eiteljorg.org/events.

See page 9 for *Jingle Rails* sponsors.



Thursday, 5:30 p.m.

DEC 4

Eagle Society *Jingle Rails* Family Night Out

Eagle Society members and their families are invited to explore and share the magic of the holiday model railroad. Contact abrown@eiteljorg.com or 317.275.1371 to register.

Friday, 5:30 p.m.

DEC 12

MEMBERS AND FRIENDS ADULTS NIGHT OUT:

Experience *It's Not Just A Quillbox* and *Jingle Rails*

Enjoy a first look at *It's Not Just A Quillbox* plus an immersive program about this new traveling exhibition at this adults-only event. \$30 per person; register at Eiteljorg.org/events. This includes a members-only opportunity to explore *Jingle Rails* after hours with tastings of fine spirits.

Saturdays

DEC 13 & 20

10 a.m.–4 p.m. both dates

Winter Art Markets

Shop from local Indiana artists and vendors for handmade artworks and delightful gifts.

JINGLE RAILS EXTENDED HOURS

Jingle Rails and the rest of the Eiteljorg will be open until 7 p.m. on the following dates:

**Saturday & Sunday,
Dec. 13 & 14**

**Thursday–Sunday,
Dec. 18, 19, 20 & 21**

**Friday–Sunday,
Dec. 26, 27 & 28**

The Museum Café will be open until 6 p.m. on those dates.



Saturdays

DEC 13 & 20

11 a.m. and 1 p.m. both dates

Jingle Rails Workshops

Can't get enough of *Jingle Rails*? Join us for two different hands-on art-making workshops.

- Dec. 13 – for adults: Holiday Card Foam Printmaking: All supplies provided.

Eiteljorg.org/events

- Dec. 20 – for children: Eiteljorg Kids Clay Train Workshop: All supplies provided.

Eiteljorg.org/events

Sunday, 10 a.m.–Noon

DEC 14

Jingle Rails Sensory Morning

For visitors with sensitivities to bright lights or loud sounds who prefer to experience *Jingle Rails* with those features reduced, the Eiteljorg is hosting a sensory morning without crowds. Details and activities registration at Eiteljorg.org/events.

EXHIBITION OPENING

DEC 13–MAR 29

Gaawii Eta-Go Aawizinoo Gaawiye Mkakoons: *It's Not Just A Quillbox*

A traveling exhibition of the Ziibiwing Center of Anishinaabe Culture & Lifeways features more than 90 beautiful works of quill art from the Great Lakes region. Included with regular admission, the exhibition focuses on how quillboxes are made and their importance to the Anishinaabe peoples. See story, page 7. Visit this [link](#).



Nji-sa ndoweminaanik / To Our Sisters
Yvonne Walker Keshick (Little Traverse Bay Bands of Odawa Indians), Harbor Springs, Michigan
Michigan State Gchi-kinoomaagegamik, Michigan
Naadiziwin gegoo Zhichigan nokiwiwin/
Michigan State University Museum, Michigan Traditional Arts Program Collection 7594.20. Photo by Pearl Yee Wong.

Saturday

DEC 13

11 a.m. and 1 p.m.

Gaawii Eta-Go Aawizinoo Gaawiye Mkakoons:

It's Not Just A Quillbox

Opening Day Programming
Celebrate the opening of *It's Not Just A Quillbox* with an 11 a.m. gallery tour and a 1 p.m. demonstration of quillworking, both led by Monica Jo Raphael (Anishinaabe / Sičánǵu Lakota), the Hoback curator of Great Lakes Native art, cultures and community engagement. Visit Eiteljorg.org/events.

Parking: The museum can validate parking in the White River State Park underground garage, while spaces are available, for visitors to the museum, café or museum store.

Saturday

JAN 3

1–3 p.m.

Dia de los Reyes Programming

Celebrate Dia de los Reyes, also known as Three Kings Day, with Rosca de Reyes bread and hot cocoa, music and more at the Eiteljorg. Included with museum admission. For more details, visit [Eiteljorg.org/events](https://eiteljorg.org/events).

Monday

JAN 19

10 a.m.–5 p.m.

Free MLK Day Programming

In honor of Dr. Martin Luther King Jr. Day, enjoy FREE admission to the Eiteljorg. This is the final date this season to experience *Jingle Rails*. Enjoy music, dance and live performances from local youth-focused organizations. Visit [Eiteljorg.org/events](https://eiteljorg.org/events) for details.



Saturday

JAN 31

11 a.m.–3 p.m.

Better Together: Celebrating US!

Join the Eiteljorg and community partners WFYI, the Indianapolis Public Library, Indiana Historical Society, Indiana Humanities and more at the Indianapolis Central Library for a civics celebration. Watch screeners from the new six-part documentary *American Revolution*, directed by Ken Burns, Sarah Botstein and David Schmidt. Storytelling artist Perry Ground will return to share stories on the theme of the Haudenosaunee influence on American democracy. Visit [Eiteljorg.org/events](https://eiteljorg.org/events) for details.



Patrice Stokes

Friday

FEB 13

5–8 p.m.

Spoken Word Event with Patrice Stokes

Join us for an after-hours event with poet Patrice Stokes, who has dazzled Eiteljorg audiences at our past Juneteenth celebrations. Visit [Eiteljorg.org/events](https://eiteljorg.org/events).

Saturday

FEB 21

1 p.m.

Leon Jett Memorial Lecture

Each year during Black History Month, the Leon Jett Memorial Lecture features a noted author or scholar who discusses important people and events in African American history. For details of the speaker and topic, visit [Eiteljorg.org/events](https://eiteljorg.org/events).



Perry Ground
(Turtle Clan member of the Onondaga Nation of the Haudenosaunee Confederacy)

CONTINUING EXHIBITIONS

THROUGH NOV 12, 2025

Radio: Richard Swanson

Experience this large barbed-wire installation in the museum's Paul Gallery.



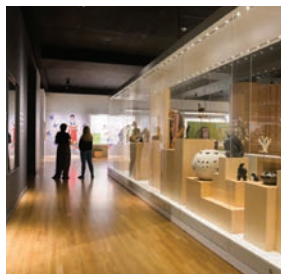
THROUGH APR 5, 2026

Voices from the Arctic: Contemporary Inuit Art

Journey to the top of the world and explore Inuit art history through sculptures, drawings and prints. Inuit artists' creativity, experiences, and voices will provide guests with insights into their environment, culture and worldview. More details at

[Eiteljorg.org/voices-from-the-arctic-contemporary-inuit-art](https://eiteljorg.org/voices-from-the-arctic-contemporary-inuit-art)

ONGOING EXHIBITIONS



DAILY

Expressions of Life: Native Art in North America

The museum's Native American galleries highlight Native stories and are organized around themes of Relation, Continuation and Innovation, and feature works recently rotated into the exhibition.

DAILY

Attitudes: The West in American Art

The museum's Western art galleries explore works by a wide variety of artists inspired by the American West. Enjoy historic and contemporary paintings and sculptures.



DAILY

**Nina Mason Pulliam Education Center
R.B. Annis Western Family Experience**

Children lead their grown-ups in learning in this immersive space with hands-on exhibits about five families of the contemporary American West. Visitors of all ages enjoy the interactive spaces.



How will the “One Big Beautiful Bill Act” affect our museum?

You may have heard about the new One Big Beautiful Bill Act (OBBBA), a major piece of tax legislation signed this summer. You may be wondering what it could mean for your giving and for the museum you care about. While the changes are still being digested, here are a few key questions and answers to help you understand the basics. And of course, your tax professional is the best source for advice about your own situation.

Q: What is the One Big Beautiful Bill Act?

A: Signed on July 4, the OBBBA is a sweeping piece of federal legislation that reshaped both tax and spending policy. Among its provisions are permanent extensions of certain tax cuts, adjustments to charitable deductions, and changes that nonprofits, including museums, will want to understand.

Q: What does this mean for individual donors?

A: The Act changes how charitable gifts are deducted.

- For itemizers, only contributions above 0.5 percent of adjusted gross income (AGI) are deductible.
- For non-itemizers, there is now a new incentive: up to \$1,000 (single) or \$2,000 (married filing jointly) in charitable contributions can be deducted even if you don't itemize.

These adjustments mean some donors will see fewer tax advantages for giving, while others, particularly those who take the standard deduction, will gain new opportunities.

Q: How about corporate supporters?

A: Businesses also face a new threshold. Charitable deductions are only allowed once giving exceeds 1 percent of taxable income, with an overall limit of 10 percent. This could affect how corporations structure sponsorships or donations, especially if they were accustomed to deducting smaller amounts.

Q: What does this mean for the museum?

A: For cultural organizations like ours, these changes bring both challenges and potential benefits. Some individual and corporate gifts may be less tax-advantaged, which could reduce the incentive for giving. On the other hand, there may be new funding opportunities tied to national priorities such as sustainability or digital access.

Q: How is the museum responding to these changes?

A: The Eiteljorg is carefully monitoring how the OBBBA affects both donors and nonprofits. In the months ahead, we will:

- Continue focusing on the impact of your gifts, since many supporters give from the heart regardless of tax incentives.
- Highlight the new standard deduction benefit for non-itemizers, which could encourage more friends to join or renew their memberships.
- Strengthen corporate sponsorship packages to emphasize visibility and community connection in addition to tax benefits.



Just ask
Jamie

- Explore new grant and funding opportunities tied to sustainability and digital access.
- Work closely with our finance and audit teams to ensure compliance with the new rules.

Most importantly, we'll keep communicating with you, our supporters, so you know how these changes might affect your giving and how your generosity continues to sustain the museum.

Jamie

Jamie Simek
Vice President for Advancement
317.275.1365
jsimek@eiteljorg.com

Eiteljorg Museum
500 W. Washington St.
Indianapolis, IN 46204

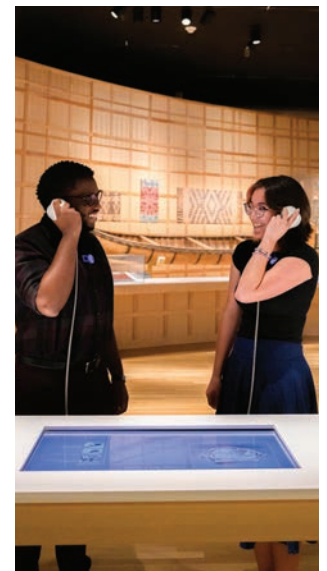
Eiteljorg.org/give-and-join/donate

GIVE THE GIFT OF MUSEUM MEMBERSHIP

Do you have a hard-to-shop-for person on your holiday gift list? Consider giving an Eiteljorg Museum membership this season. Family and friends will enjoy a year of benefits, including free museum admission, discounts at the museum store and café, and discounts or free entry to museum events or programs.

Members also receive invitations to special activities, such as Coffee & Conversation gatherings with visiting artists. Children enjoy the museum's interactive family discovery area, the Nina Mason Pullium Education Center, featuring the R.B. Annis Western Family Experience.

As perfect stocking stuffers, gift memberships can be purchased at Eiteljorg.org/membership. Or contact abrown@eiteljorg.com or 317.275.1371.



New book about an extraordinary collection of Native art was led by Native editors and writers

On a powerful day of reflection, storytelling and dialogue, the museum on Sept. 16 marked the official release of a groundbreaking Native-led publication, *In the Company of Our Relatives*. Published by the Eiteljorg, this new book brings together personal stories that explore deep-rooted relationships, cultural reconnections, and the enduring legacy of Great Lakes Indigenous makers whose artistry continues to inspire today.

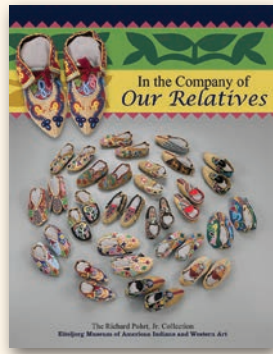
Thanks to a generous grant from Lilly Endowment Inc., the Eiteljorg Museum in 2019 acquired an extraordinary collection of cultural belongings from tribal nations of the Great Lakes region. The works had been collected by Richard Pohrt, Jr., a Michigan collector and Great Lakes Native art enthusiast, who maintained them in remarkable condition for many years until the Eiteljorg acquired them to add to its collections.

The grant from Lilly Endowment supported the publishing of an art catalog about the collection, with essays by contributing writers who are descendants of Native artists who created the works. The funding also supported an earlier convening at the museum, at which the writers engaged with their cultural belongings. These works embody the innovation, beauty, and profound knowledge of Indigenous artists whose creativity was shaped by the land and lifeways of their Ancestors.

"*In the Company of Our Relatives* is not a traditional academic study. Instead, it is a vibrant tapestry of voices from Native descendants of the original makers, offering reflections that are deeply personal and rooted in oral traditions. Each essay was edited with care not to revise, but to honor and preserve the integrity of each contributor's voice. Together, these stories offer a rare and intimate glimpse into the living relationships between Indigenous people and their ancestral belongings," stated Monica Jo Raphael (Anishinaabe / Sičǎŋǵu Lakota), the Hoback curator of Great Lakes Native art, cultures and community engagement, who co-edited the book.

"This project began with prayer and intention, guided by the understanding that these belongings are not mere artifacts. They are relatives — vessels of *gikendaasowin* (knowledge) and expressions of *Anishinaabe Indendamowin* (ways of living). They testify to the resilience, brilliance, and creativity of the Ancestors, and to the power of memory, story, and connection that lives on through their descendants," Raphael added.

Part of a three-day Great Lakes Native Art Convening, the book launch event Sept. 16 included two panel discussions about *In the Company of Our Relatives*, focusing on cultural memory, reclamation, and the vital role of Indigenous storytelling. Edited by Monica Jo Raphael and Mary Deleary, Ph.D., (Chippewas of the Thames First Nation), the book is available for purchase in the Eiteljorg Museum Store.



At this QR Code, find more resources about the new Eiteljorg book, *In the Company of Our Relatives*.



Membership information:

Contact membership@eiteljorg.com or scan this QR code.

Thank you to the following donors for memberships and gifts received April 1–July 31, 2025.

Due to space limitations, only contributions of \$150 or more are listed, with the exception of gifts in honor or memory. If your name is not listed as you would like it, please accept our apology and call 317.275.1371.

Membership gifts

Vision Circle

Cumulative annual giving
\$25,000 and above

Pat Anker
Dr. Rosanne Bonjouklian
Robert Braitman
Steve Cagle
Virginia Merkel
Mr. Hil Raab, Jr.
Evelyn Seeley
Diane G. Thompson and Donald E. Knebel
Cathy Turner
Bill and Roberta Witchger

Chairperson's Circle

Cumulative annual giving
\$10,000–\$24,999

Charles* and Helen Coghlan
Angie and Dick Darlington
Roger and Mindy Eiteljorg
Pam and Gary Jursik
Mr. and Mrs. Stephen Nash
Joan Perelman
Mr. and Mrs. Thomas E. Reilly, Jr.
Ann M. Stack
Don and Angela Woodley
Sharon Zimmerman

President's Society

\$5,000–\$9,999
Cynthia Munerol

Golden Eagle Society

\$2,500–\$4,999
Lori Efromyson-Aguilera and Sergio Aguilera
Michael Khalil
Amanda and Eric Rail
Diane and Randy Rowland

Eagle Society

\$1,500–\$2,499
Shelley Bloch
Felica Ahasteen-Bryant and Kenneth Bryant
Phyllis Cockerill
Gayle Cox, Ph.D. and Mr. Carl K. Cox
Alisa Nordholt-Dean and Dave Dean
Tom and Patty Gibbs

Kathryn Haigh and Brad Sterling
Richard Hailey and Mary Beth Ramey
Cindy and Robert Hoyer
Katrina Catelyn-Irwin
Benny and Vicky Ko
Charlotte Mittler
Carolyn R. Mueller, Ph.D., RN and Gary L. Mueller, M.D.
Heather and Patrick Murphy
Frank and Patte Owings
Margaret E. Piety and Josef M. Laposa
Sunny Reed
Mr. and Mrs. J. David Resley
Jamie and Mike Simek

Advocate Members

\$1,000–\$1,499
Hanni and William Cramer
Eleanor Lopez

Patron Members

\$500–\$999
Maryann and Chet Blanton
James Buss and Cara Wood
James Hays and Linda Shoultz
Darby McCarty
General Carol Mutter and Colonel James Mutter
Carole Ross

Sustaining Members

\$250–\$499
Amy and Michael Alley
Viki and Bruce Anderson
H. Dean and Donna Andrews
David Braitman and Amy Pottenger
Victoria Broadie
David and Susan Brooks
Briana Calhoun
Patricia and Jesse Clark
Dr. and Mrs. Michael R. Cohen
Brittany Crenshaw and Torin Chisholm
Nancy and Robert Davis
Karla Fehd and Damian Garino
Dave and Donna Grow
Dale Fletcher and Janet Clegg
Marie and Marvin Kemple
Fredrick and Carol Lane
Mr. and Mrs. Harry F. McNaught
Dianne and James Moss
William L. Scott
Linda and Joseph Sherwood
Jack and Barbara Simon
Ann and Steve Smith
Linda and Jerry Stark
Shelley Stewart and Scott Mills
Nicholas and Terry Watson
David and Joann Wehlage
Thomas and Kathleen Williams
Andrew Woodward
Chris and Megan Wright

Continued on page 16

MEMBERSHIPS AND DONATIONS

Continued from page 15



MAKING EVENTS UNFORGETTABLE

Host your next event at the Eiteljorg Museum, where stunning architecture and artful surroundings create the perfect setting for a truly memorable occasion. From weddings and receptions to corporate gatherings, our team partners with Kahn's Catering and other vendors so you and your guests enjoy an unforgettable experience in the Eiteljorg's beautiful spaces.



**Eiteljorg
Museum**

spacerental@eiteljorg.com

317.636.9378

[Eiteljorg.org/event-spaces](https://eiteljorg.org/event-spaces)

Scan QR code
to book a tour:



Contact our Rentals and Events team, Holly Hill-Brooks, director of rentals and events, right, and Isabelle Davis, rentals and events coordinator, left, to secure your event.

Contributing Members

\$150-\$249

Carmalt W. Adams III
Blanche Allen
Richard Anthony
Stephanie Arnett
Steve and Debbie Benefiel
Fred and Annette Biesecker
Mary Bookwalter
Deborah Boyer
Leslie Bozeman
Laura E. Bramble
Jesse Brand and Geri Handley
George and Susan Brattain
Bonnie Bray and Joe Hovish
Marsha Brown
Jeffrey and DeDe Bryan
John E. Burns, III
Michael Chenoweth and Pamela Pierce
William S. Coleman, Jr.
Rebecca Cothran
Becky Courtney-Knight and Norman Knight
Norwood and Aerah Davis
Larry Davis
Naomi and JJ Degan
Michael and Phyllis Dotson
Earl and Susan Duckwall
William and Coleen Ehrig
Max and Lauren Eiteljorg
Robert D. Epstein

William Esarey and Robin-Elizabeth Parsley
Phyllis Fee and David Fee
Robert Fields
Roy Francis
Parrish and Vernelle Galloway
Bruce and Marcia Gascho
Jo Ann and Nicholas Hatfield
Dr. Mark Heiden and Dr. Mary Ellen Lennon
John H. Heiligenstein
Michael Hertel and Joelylynn Gifford
Joan Whitman Hoff and Stephen Hoff
Doug Hubbs
Debra Hughes and Don Knapp
Sue and Bill Kinman
Christian Le Sesne and Carol Baker
Linda Miller and Martha McCullen
Dr. L. Lee Morganett
Ellen M. Croteau Muth and Heather Ogoussan
Robin and Tracey Nix
Joseph and Rebecca Norman
Robin and Gregory Pemberton
Finn Ole Petersen
Phillip A Pope and Huigh Dennis
Jane Rapinchuk and Mark Kowala
Liorah Rapkin and Michael Schoen
Robert and Janet Redmond
Deborah Resmick

Julia Ritter
Michael and Kaaren Rodman
James and Maureen Ross
Patricia Herron and Russell Rumansoff
Mark and Angela Sadler
Mr. Michael Sawyers
Ann and Ivan Schell
James Shea
William Shrewsbury
Willa and Lon Shultz
Deborah Smith
Carey Spain and Cheryl Mills
Roseann Spisak and Mike Dowden
Joann and Steven Stapleton
Susan Stratigos-Scanlon and Thomas Scanlon
Sarah Strawbridge
Greg and Beth Thomas
Muriel and Robert Treadwell
Robert and Barbetta True
Laurie Tuttle and Donald Crane
Ellen Tyner
Pam and John Ulrich
Susan Velte
Patrice and John Waidner
Nancy Waldon and Frank Wood
Frank and Jane Walker
Dieter and Eleanor Weissenrieder
Robin and Charlitta Winston
Prof. Marianne S. Wokeck
Mark and Debra Zwayer

Donors

Annual Fund and other designated gifts

Anonymous
Kevin Andrews
Sarah Batt
Mrs. Jeanne and Glen Bohannon
Barbara Burke
Laura Dodson and Robert Wolfe
Roger and Mindy Eiteljorg
William E. Forehand, Jr.
Linda Gilman
Petra Koops
Virginia Merkel
Christina Morris
Mr. and Mrs. Stephen Nash
Eloise Paul and Bill Lee
Patricia S. Mohler
Phillip V. Price
Jack and Barbara Simon
Mark and Jorgena Watson
David and Joann Wehlage
Courtenay and Emily Weldon
Paul D. and Carolyn A. White
Prof. Marianne S. Wokeck
Jim and Karen Wolf
Chris and Megan Wright

John Vanausdall Capital Improvement Endowment Fund

Fred and Angie Green

Art Acquisition Fund

Ellen M. Reed*
Ms. Christy Vezolles

Endowment

Evelyn Seeley

Gifts in Honor and Memory

*In memory of Michael Duty:
Gifts made in memory of Michael
Duty go toward the Michael Duty
Founding Director Internship
Endowment, supporting the next
generation of museum professionals
with leadership opportunities.*

Anne Adams
Don Baynham
Andrew and Sarah Brown
Laura Duty
Ron Gleason
Richard and Mary Kenny
Jim and Jeanne Malone
Jack Nokes
Gary and Annette Smith
Diane G. Thompson and
Donald E. Knebel

In memory of Donna K. Hilgeman
Brittany Glasschroeder
Felicity Mudgett

In memory of Bart Hudson
Lana Stevens

In memory of Helen Cox Kersting
Pat Anker

In memory of Larry A. Richardt
Jeanne Schultz Angel

In honor of Rebekah Ryan
Anonymous

Foundation, corporation and government gifts

Allen Whitehill Clowes Charitable
Foundation, Inc.
Art of the West magazine
Ayres Foundation, Inc.
Consulate General of Canada
Efroymson Family Fund, a CICF Fund
Eli Lilly and Company Foundation, Inc.
Environment and Culture Partners
Federal Home Loan Bank of
Indianapolis
Fifth Third Bank
Kimball Electronics
Indiana Youth Institute
Lilly Endowment Inc.
Newfields
Nicholas H. Noyes, Jr. Memorial
Foundation, Inc.
PNC Bank
The City of Indianapolis through the
Indy Arts Council
The Glick Family Foundation
The Hagerman Group
The Penrod Society

Gifts in kind

Blick Art Materials
Costco Wholesale
Honeymoon Image & Design
Iconic Digital Marketing, LLC
Stuart's Household Furniture
Moving and Storage, Inc.

Indian Market & Festival

Dr. Rosanne Bonjouklian
Michael A. Bostelman
Robert Braitman
Victoria Broadie
Steve Cagle
David and Susan Charlesworth
Dr. and Mrs. Michael R. Cohen
Hanni and William Cramer
Angie and Dick Darlington
Linda Darr
Kurt Ehrhardt
Drs. Richard and Becky Feldman
Donnarae Freyermuth
James and Lisa Harkness
Mark and Becky Herbison
Polly H. Hix and Tony J. Fair
Sheila and David Hass
Cindy and Robert Hoyer
Lou Jungheim and Dr. Thalia Nicas
Pam and Gary Jursik
Kelly and Stephan Masoncup
Brittany McGee
Virginia Merkel
Sharon Mills
Carolyn R. Mueller, Ph.D., RN, and
Gary L. Mueller, M.D.
Mr. and Mrs. Stephen Nash
Dorit Paul
Margaret E. Piety and
Josef M. Laposa
Mr. Hil Raab, Jr.
Chris Reading
Mr. and Mrs. Thomas E. Reilly, Jr.
Melissa Richberg
Clay and Amy Robbins
Nancy Ray Ross
Diane G. Thompson and
Donald E. Knebel
Cathy Turner
Bill and Roberta Witchger
Don and Angela Woodley

20th annual Quest for the West® Art Show and Sale

Robert Braitman
David and Gisele Found
Patty and Thomas Gibbs
Carla and Mike Leppert
Virginia Merkel
Mr. and Mrs. Stephen Nash
Frank and Patte Owings
Joan Perelman
Evelyn Seeley
Diane G. Thompson and
Donald E. Knebel

EITELJORG GIFTS WILL BRIGHTEN YOUR HOLIDAY SEASON



Step into the Eiteljorg Museum Store this fall and holiday season and discover a warm, welcoming space filled with unique gifts that celebrate culture, craftsmanship and care.

Highlights This Season:

- Cozy Pendleton throws
- Warmth Shop featuring stylish hats, scarves, and gloves
- Luxurious bath and body products
- Handcrafted jewelry
- Signature Eiteljorg essentials
- Beautiful Native American art
- Comforting candles, soothing teas and rich coffee
- T-shirts, mugs, postcards and magnets from the collection of artist Ryan Singer (Diné [Navajo]).



Eiteljorg
FRANK AND KATRINA BASILE
Museum Store

STORE HOURS

MON–SAT: 10 a.m. to 5 p.m.
SUN: Noon to 5 p.m.
317.275.1300

store@eiteljorg.com

[Eiteljorg.org/visit/shop](https://eiteljorg.org/visit/shop)

Every purchase supports Indigenous artists and local makers — making your gift-giving even more meaningful. **Members enjoy 15 percent off** all purchases — just one more reason to shop with heart this holiday season. Visit us in-store and make your holidays unforgettable!

Eiteljorg Museum of American Indians and Western Art

White River State Park • 500 W. Washington St.
Indianapolis, IN 46204
Eiteljorg.org

LOOKING AHEAD TO THE FEBRUARY 2026 ISSUE OF *STORYTELLER*

COWBOY COUTURE: THE FASHION OF JERRY LEE ATWOOD MAR 28–AUG 2, 2026

Indianapolis designer Jerry Lee Atwood is acclaimed for his creations seen on fashion runways: custom-made Western-style outfits with rhinestones and embroidery that are worn by famous entertainers. The Eiteljorg's exhibition of Atwood's designs connects his work to classic country music looks and the public's ideas of "the West."



Jerry Lee Atwood
Scott Hinds, *Magnolia suit*
Various materials
Loan from Scott Hinds of The Royal Hounds

SPONSORED BY:



ART AND CULTURE SPRING TOUR TO THE PACIFIC NORTHWEST APRIL 28–MAY 5, 2026

Join us on an extraordinary journey from Vancouver's contemporary Indigenous art studios to Seattle's glowing glass workshops. This 8-day journey connects you with the artists, stories and traditions that make the region unforgettable. For more details, please get in touch with our travel partner, Michelle Sitbon with Art Voyage, at michelle@yourartvoyage.com, or Jamie Simek, vice president for advancement, at jsimek@eiteljorg.com.



Your support as a member, donor or corporate sponsor is instrumental to the Eiteljorg presenting impressive exhibitions and programs. To learn about the benefits of supporting these efforts, contact Kevin Andrews at kandrews@eiteljorg.com or 317.275.1360 or Melanie Lachowicz at mlachowicz@eiteljorg.com or 317.275.1333.



Stay connected with the Eiteljorg on social media and at Eiteljorg.org, where you can also sign up for our biweekly e-newsletter.

For general information about the Eiteljorg Museum, call **317.636.9378**.

