

BRINGING FAMILIES BACK TO THE EITELJORG

SNOW DAYS

A new exhibition of exceptional
winter-themed art from the
Eiteljorg's collections

NOV 5, 2022 – FEB 5, 2023

P2



FIFTH THIRD BANK JINGLE RAILS: THE GREAT WESTERN ADVENTURE

NOV 19, 2022 – JAN 16, 2023

P4



DÍA DE MUERTOS COMMUNITY CELEBRATION

A festival of Latiné cultures

OCT 29, 2022

P6

**COMPLETING PROJECT 2021:
NATIVE AMERICAN GALLERIES OPEN**

P8

**JOHN VANAUSDALL PLANS
FOR MUSEUM'S FUTURE**

P10

**VOLUNTEERS: KEY TO
EITELJORG'S SUCCESS**

P17



Collaboration on *Día de Muertos* earns award from Indy Arts Council

The Eiteljorg Museum shared in an important award with local Latiné arts group Arte Mexicano en Indiana for their mutual efforts to build the local *Día de Muertos* Community Celebration.

The Indy Arts Council presented its annual ARTI Award in the Community Partnership category to the museum and the organization, for their work together on the Day of the Dead event that has grown significantly over the years. "Each organization brought strengths and knowledge — and an open mind and willingness to learn — to what has become a very successful collaboration," Indy Arts Council stated about the award, presented during the council's Start with Art event Aug. 25 at the Indiana Roof Ballroom.

Eduardo Luna, founder of Arte Mexicano en Indiana, and John Vanausdall, Eiteljorg president and CEO, both appeared in the council's video about the awards; watch it at this link: <https://bit.ly/3cUMoFG>. For details of this year's *Día de Muertos* Community Celebration, see page 6.



Eduardo Luna of Arte Mexicano en Indiana, left, and John Vanausdall, center, representing the Eiteljorg, received the ARTI Award from the Indy Arts Council for the *Día de Muertos* Community Celebration. Indy Arts Council President and CEO Julie Goodman is at right. Image courtesy of KP's Photography and the Indy Arts Council

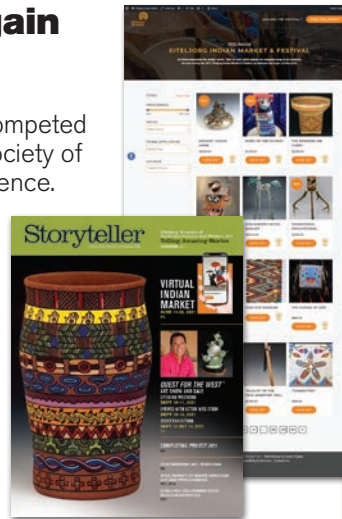
Top statewide public relations awards again go to museum and the marketing team

In June 2022, the Eiteljorg's Marketing and Communications team competed in the Pinnacle Awards contest presented by the Public Relations Society of America, Hoosier Chapter, and won two statewide awards for excellence. The competition recognized the best projects and programs in the public relations industry in Indiana for work done during 2021.

For the second year in a row, the Eiteljorg's *Storyteller* magazine won the Pinnacle Award for best magazine — the top award given in that category. PRSA judges' comments: "Great visuals included that draw the reader into it Overall, I really liked the layout, look and content of the magazine Very well designed, for a specific audience."

Due to the pandemic, in the spring of 2021, the Eiteljorg transformed its 29th annual Indian Market and Festival into a Virtual Indian Market, which was a major undertaking for the museum's Education and Public Programs department and the marketing team. The website Eiteljorg.org/IndianMarketandFestival and other tactics were developed to deal with the unusual circumstances. That strategy received the PRSA Award of Honor in the electronic/digital communications category. Judges' comments: "Great creative ideas to address a tough situation The website looks amazing. It clearly took a lot of skill and creativity Many people participated and the artists were pleased."

The museum's team that worked on these honored projects includes marketing and communications director Bert Beiswanger, public relations manager and *Storyteller* editor Bryan Corbin, former digital marketing coordinator Sophia Holt-Wilson, graphic designer Mike Fasig of Honeymoon Image & Design, digital marketing specialist Brooke Sullivan and former marketing intern Sophie Jaegly. Also recognized in the award for Virtual Indian Market are Brandi Crocker, Eiteljorg manager of special events and artist engagement, and Iconic Digital of Fishers, Ind.



Eiteljorg Storyteller

Eiteljorg Museum Magazine

Winner of the **Pinnacle Award** from the Public Relations Society of America – Hoosier Chapter presented in 2021 and 2022, and winner of the PRSA's **Award of Honor** presented in 2019 and 2020

Volume 17, Number 3

President and CEO

John Vanausdall

Vice President for Advancement

Nataly Lowder

Director of Marketing and Communications

Bert Beiswanger

Editor and Writer

Bryan Corbin

Design

Honeymoon Image & Design

Contributing Writers

Jennifer Hiatt

Johanna M. Blume

Dorene Red Cloud (Oglala Lakota)

Eduardo Luna

Alisa Nordholt-Dean

Felix J. Medina

Nataly Lowder

Bert Beiswanger

Kay Hinds

Rachel Noll

Brooke Sullivan

Contributing Photographers

Eiteljorg Museum staff, archives and interns

Casey Cronin

Hadley Fruits Photography

Brittany Erwin Photography

Zach Dobson

Applied Imagination

KP's Photography and the Indy Arts Council

Baxter Black photo by Gary Gainer with the

Tucson Citizen

Editor's Note

Every effort is made to ensure that exhibition images published in *Storyteller* magazine accurately reflect the artworks on exhibit at the Eiteljorg Museum during the dates listed. Details of announced events and exhibitions might change too late for the *Storyteller*'s publication deadlines. For comments or questions, call 317.275.1315 or email bcorbin@eiteljorg.com.

Membership information

Contact Jennifer Hiatt at

jhiatt@eiteljorg.com or 317.275.1360

On the cover

Arturo Antonio Chavez (American, born 1949), *Mount Wilson Winter*, 2010, oil on canvas, 56½ × 90 inches
Eiteljorg Museum of American Indians and Western Art. 2010 *Quest for the West*® Harrison Eiteljorg Purchase Award 2010.21.1

File image of the 2021 *Día de Muertos* Community Celebration at the Eiteljorg, presented with Arte Mexicano en Indiana

File image of the Fifth Third Bank *Jingle Rails: The Great Western Adventure*



Fall and winter are exciting times to visit the Eiteljorg

Friends,

The change of seasons is in the air. Soon the fall harvest and beautiful autumn leaves will give way to the snowfall of winter and the bustle of the holidays.

Change is in the air at the Eiteljorg Museum as well. You may have heard that I recently announced my retirement after 26 years as president and CEO, effective next June 30. As you will read on page 10, the Board of Directors developed a careful process to conduct a national search for my eventual successor. While I am looking forward to retirement, I can confidently say this has been one of the best jobs anywhere.

I am especially proud of the Eiteljorg Museum's role as a cultural center and leader in cultural diversity, understanding and inclusivity. I am grateful for the support of the Eiteljorg's Board of Directors, our many members and supporters, and especially for the museum's loyal and hard-working staff and volunteers, who make all of it possible. Best of all are the friendships I have made throughout the greater Indianapolis community and larger art world, especially among our Native American and Western artist friends.

Speaking of Western artists and art, thanks to all who participated in the 17th annual *Quest for the West*[®] Art Show and Sale on Sept. 9-10, or enjoyed the *Quest* exhibition. *Quest* is one of the Eiteljorg's initiatives — along with the Eiteljorg Contemporary Art Fellowship and Indian Market and Festival — that contributes to the museum's national reputation for excellence. Our most recent Indian Market and Festival June 25-26 was the 30th annual market, and

the first held in person since 2019; and it was wonderful to welcome back so many artists and guests.

During my remaining time at the Eiteljorg, I hope to see all of you at the museum. Our spectacular Native American Galleries opened in June with an entirely new presentation. The reimagined Native galleries, the 2018 Western galleries reinstallation, the recent expansion of the Allen Whitehill Clowes Sculpture Court and the renovation of our children's discovery area, the Nina Mason Pulliam Education Center, are parts of the museum's capital/endowment campaign, *Project 2021*. Through the generosity of supporters such as you, the Eiteljorg is close to meeting its \$55 million fundraising goal, and has opened these spaces on time and increased its operating endowment.

We are also pleased to announce that through generous donations from Lilly Endowment Inc., a portion of our collections are now online and accessible to museum visitors who visit our website. View the online



Nathan Solano
Portrait of a Cowboy, 2022
Acrylic on canvas, 30 x 40 inches
Harrison Eiteljorg Purchase Award,
presented by The Western Art Society



At the 2022 *Quest for the West*[®] Art Show and Sale, artist Nathan Solano, center, was recognized with the Harrison Eiteljorg Purchase Award. With him are *Quest* Chair Cathy Turner, left, and Eiteljorg President and CEO John Vanausdall, right. More than \$1 million in Western art was sold at *Quest for the West*[®]. Image courtesy of Brittany Erwin

collections database at:
Eiteljorg.org/collections.

Looking ahead, several exceptional events and openings take place at the Eiteljorg this fall and winter. Our annual free celebration of *Día de Muertos* on Oct. 29 brings communities together to enjoy music, dance and Latiné cultures. As you will read on page 6, it's one of the museum's biggest gatherings each year.

You can put yourself in the right frame of mind to enjoy winter by experiencing a delightful new exhibit, *Snow Days*, opening Nov. 5. Native American and Western artworks — including pottery, painting and textiles — convey the peaceful beauty of the first big snowfall of the season.


During the holidays, a popular annual family tradition for many is visiting the Fifth Third Bank *Jingle Rails: The Great Western Adventure*. The Eiteljorg's whimsical model train layout, hewn of all-natural materials, returns Nov. 19 in the newly expanded Clowes Sculpture Court. The trains run through Jan. 16.

As we reflect on 2022, I want to thank a former employee

who recently moved on: digital communications coordinator Sophia Holt-Wilson, whose creativity and professionalism improved the Eiteljorg's presence online and in social media. We wish Sophia the best in her new career in Chicago. We welcome our new digital communications manager, Dani Vasquez, who comes to the Eiteljorg after several years promoting tourism in Lake Michigan communities through the South Shore Convention and Visitors Authority. And we welcome our new public programs manager, Elizabeth Bostelman, who brings years of experience in planning and developing all aspects of public programming that engage visitors.

So as you gear up for shorter days, longer nights, holiday breaks from school and time spent with family, please plan to join us at the Eiteljorg Museum this fall and winter.

Sincerely,


John Vanausdall
President and CEO
Eiteljorg Museum



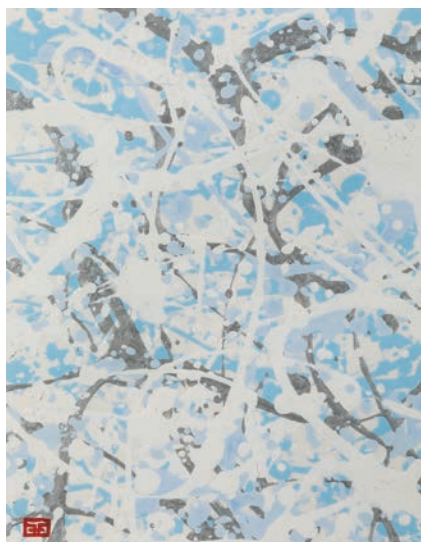
Oscar Edmund Berninghaus (American, 1874-1952), *Night of the Dance*, before 1925, oil on canvas, 30 x 40 inches
Eiteljorg Museum of American Indians and Western Art. Bequest of Kenneth S. "Bud" and Nancy Adams. 2015.8.17

SNOW DAYS

Nov. 5, 2022–Feb. 5, 2023 | Special Exhibitions Gallery

Gerry Quotskuyva (Hopi, born 1959), *Nuvak' Chin Mana (Snow Maiden)*, 2005, acrylic on cottonwood, 9¼ x 5 inches
Eiteljorg Museum of American Indians and Western Art. Gift of the Margot L. Eccles Revocable Trust. 2012.18.53





Harry Fonseca (Nisenan Maidu/Portuguese/Hawaiian, 1946-2006)
Winter, 2003-2004
 2005 Eiteljorg Fellow
 Acrylic on paper, 9 x 7 inches
 Eiteljorg Museum of American Indians and Western Art. Gift of Lisa Anne Schlenker in memory of Emily Catherine Diehl Schlenker. 2017.13.4



Meryl McMaster (Plains Cree/Blackfoot, born 1988)
Winged Calling, 2012, digital chromogenic print on Fuji Crystal Archive Matte Paper made on a LightJet 430 printer, 37 1/4 x 51 1/2 x 1 1/2 inches
 2013 Eiteljorg Fellow
 Eiteljorg Museum of American Indians and Western Art. Museum purchase from the Eiteljorg Contemporary Art Fellowship. 2013.7.4

In *Snow Days*, winter adds layers of beauty to surroundings

By Johanna M. Blume, curator of Western art, history and culture, and Dorene Red Cloud (Oglala Lakota), curator of Native American art

As we look to the end of the year, and colder temperatures, the Eiteljorg Museum is preparing for a different kind of exhibition. Opening Nov. 5, *Snow Days* features works from the museum's permanent collection that highlight winter and snowy environs. With objects ranging from delicate carved ivory miniatures of sled dogs to snowy Western landscapes to exquisitely beaded mittens designed to protect the wearer from the cold, the exhibit will highlight works that embrace the beauty of the season and the ingenuity it takes to survive it.

For many, winter is a time to tell stories during long nights, gather with loved ones and celebrate important traditions. Artwork in the exhibition will explore all of these aspects of winter and more.

Take, for example, the painting *Night of the Dance* (Oscar Edmund Berninghaus, American, 1874-1952), which depicts a group of horses huddled together in the night, tied up at a hitching post as snow falls gently upon them. Warm light shines from a window, a sign of the dance taking place within the building behind them.

For many people, including artists, winter means more time spent inside to work on their art, such as preparing furs into gloves and mukluks before beading floral patterns onto them. These essential items keep the wearer warm (as well as fashionable) in frigid sub-Arctic and Arctic conditions. The winter-wear examples in the exhibition are beautifully embellished, showcasing the skill and creativity of their artists.

It may also be a time when some artists, such as 2013 Eiteljorg Fellow Meryl McMaster (Plains Cree/Blackfoot), take photographs in their winter landscapes that serve as a source of inspiration. Hues other than the white of snow are evident in winter, as

Frederic Remington (American, 1861-1909)
Line Riding in Winter, 1888
 Oil on board, 19 1/4 x 14 1/4 inches
 Eiteljorg Museum of American Indians and Western Art. The Gund Collection of Western Art, Gift of the George Gund Family. 2002.15.26



is apparent in the *Four Seasons* series of spatter paintings by 2005 Eiteljorg Fellow Harry Fonseca (Nisenan Maidu/Portuguese/Hawaiian, 1946-2006). They offer a colorful and abstracted perspective on the season.

Ceramic artists Pahponee (Kansas Kickapoo Tribe/Citizen Potawatomi Nation) and Les Namingha (Hopi-Tewa/Zuni) utilize colors, shapes and designs in their firing methods or glazes that evoke the senses and sights of winter, reminding us that this season is extraordinary and worthy of our admiration.

Some artworks in the exhibition will remind guests how the first snow blast of the season imposes a sudden, tranquil, peaceful beauty on the landscape, temporarily pausing or changing everyday activities.

The Eiteljorg is open daily (except for Thanksgiving Day, Christmas Day and New Year's Day), and *Snow Days* is included with regular museum admission. Running from Nov. 5, 2022, to Feb. 5, 2023, *Snow Days* coincides with the museum's annual holiday tradition *Jingle Rails: The Great Western Adventure*.

Together they offer a wonderful opportunity to spend time with friends and family enjoying the season.

The Eiteljorg will offer child-friendly public programming activities related to *Snow Days* and *Jingle Rails*, at 1 p.m. Dec. 3, 10 and 17; see pages 13-14 for details.



Les Namingha (Hopi-Tewa / Zuni, born 1967)
Winter Spirits, clay, 5 1/2 x 8 inches
 Eiteljorg Museum of American Indians and Western Art. Gift of Helen Cox Kersting in Memory of Dr. Hans Joachim Kersting. 2008.8.418



Holiday favorite *Jingle Rails* rolls into the Eiteljorg Nov. 19 Family activities added this year in newly expanded space

By Bert Beiswanger, director of marketing and communications

Taking a family vacation out west or celebrating annual holiday traditions can create treasured memories. Kids remember them for a lifetime; parents and grandparents cherish moments they don't want to end. The Eiteljorg once again brings back a family favorite this holiday season with a journey through the Fifth Third Bank *Jingle Rails: The Great Western Adventure*, opening Nov. 19 and running through Jan. 16 at the museum.

Jingle Rails is a whimsical model railroad of G-scale electric trains that ramble over trestles and through tunnels along more than 1,200 feet of track. Trains wind past woodsy, artistic representations of the skyline of Downtown Indianapolis and landmarks of

the American West, all made from natural materials such as twigs, bark, leaves, pine cones, seed pods, nuts and more. The backdrops are decorated with holiday lights and accented with railroad sounds.

A miniature world

As visitors enter the museum and approach *Jingle Rails*, they are treated to the sights and sounds of the iconic Indianapolis Motor Speedway, rendered in miniature — complete with famous Pagoda, illuminated scoring pylon, IMS Museum and Goodyear Blimp. Speeding around the track are working Indy slot cars including the Fifth Third Bank Rahal Lanigan Racing Graham Rahal Indy car, and the sound effects include IMS Radio Network audio.

Jingle Rails guests then enter scenes of beautiful Downtown Indianapolis, including miniatures of Lucas Oil Stadium, Monument Circle, the OneAmerica Tower and other local landmarks. As they wander through the layout, visitors encounter iconic scenes of the American West, including Las Vegas, the

Grand Canyon, Yellowstone National Park, Mount Rushmore, Mesa Verde, the Golden Gate Bridge and more, again all constructed of material found in nature.

One of *Jingle Rails*' highlights is the Indiana State Fair scene, this year back in its original featured space. A popular part of *Jingle Rails* for



The Glass Barn education center will be new in the State Fair diorama in 2022.
Image courtesy of Applied Imagination



Reserve tickets in advance at
Eiteljorg.org/JingleRails



To volunteer to help with
Jingle Rails, contact Rachel
 Noll at 317.275.1325 or
Rnoll@eiteljorg.com.

years, the State Fair diorama features a colorful working Ferris wheel, the iconic Coliseum and more. New this year: a miniature of the Glass Barn education center, made possible by the Indiana Soybean Alliance.

Jingle Rails takes place inside the museum's recently expanded Allen Whitehill Clowes Sculpture Court, which now has a striking all-glass east wall facing West Street. With additional floor-space for visitors to spread out and enjoy *Jingle Rails*, there will be new child-friendly activities this year, including train tables with wooden toy trains, magnetic tiles for assembling your own train, an "I spy" activity and a reading nook filled with train-themed children's books.

A visit to a family holiday tradition

The appeal of *Jingle Rails* is multigenerational: Children of all ages love model trains, and parents and grandparents enjoy seeing the displays of national parks that may remind them of a past favorite family vacation out West. But in the moment, people simply love creating magical family holiday memories.

Now in its 13th year, *Jingle Rails* is made possible with the help of many supporters, such as title sponsor Fifth Third Bank, whose downtown building, custom train engine and Indy car are featured in the display.

The creative team at Applied Imagination in Alexandria, Kentucky — the botanical architecture firm founded by

Paul Busse — designed and built *Jingle Rails* and assembles all the track and backdrops. During the run, a hardworking team of volunteer model train enthusiasts — known as "the train guys" — ensures the trains run smoothly and helps answer visitors' questions.

One of Indy's most affordable holiday attractions, *Jingle Rails* is included with regular museum admission. Members are free. Children ages 4 and under have free admission. For non-member advance sale tickets, visit

Eiteljorg.org/JingleRails.

Join us for *Jingle Rails* art-making workshops on three Saturdays: Dec. 3, Dec. 10 and Dec. 17; see pages 13-14 for details.

FIFTH THIRD BANK **JINGLE RAILS: THE GREAT WESTERN ADVENTURE**

**NOV 19, 2022–
 JAN 16, 2023**



FIFTH THIRD BANK

SPONSORED BY:



The Sunrise Foundation, a fund
 of the Indianapolis Foundation

#JingleRails



DÍA DE MUERTOS DAY OF THE DEAD

SATURDAY, 10 a.m.–7 p.m.

OCT 29

FREE admission

COMMUNITY ART AND OFRENDA EXHIBIT

OCT 10–NOV 4

Ruth Lilly Auditorium,
Eiteljorg Museum

ARTE
MEXICANO
EN INDIANA



SPONSORED BY:



What visitors are saying:

Guests at the 2021 *Día de Muertos* Community Celebration completed surveys, and this is how they described the event:

“Such a great experience! ... It gets better every year! This is an awesome event!”

“This is a wonderful and beautiful cultural event...”

“Love love love this event! Thank you for sharing our culture!”

“It was very beautiful. It warmed my heart to feel all the beautiful vibes.”



Free *Día de Muertos* celebration brings community together

By Alisa Nordholt-Dean, vice president for public programs and Beeler Family director of education, and Eduardo Luna of Arte Mexicano en Indiana

Nearly a decade ago, community partner Nopal Cultural reached out to discuss merging two very different *Día de Muertos* programs – the Eiteljorg Museum's low-key Saturday program featuring a few performance groups and guest artists, and Nopal Cultural's evening event centered on a Catrina fashion show. At that initial meeting, neither partner could imagine how the program would grow and evolve into the true community spectacle it has become. Now, with new community partners in the mix and Arte Mexicano en Indiana leading the way, this year's *Día de Muertos* program at the Eiteljorg promises to be bigger and better than ever.

What is *Día de Muertos*?

With roots going back thousands of years to Indigenous traditions in Mexico, this holiday is a time to gather together to remember and celebrate friends and relatives who have passed on. *Día de Muertos*, also called Day of the Dead, has evolved into a

diverse festival, celebrated not only in Mexico but in the U.S. and many other countries.

Opportunities throughout the month of October

Storyteller and installation artist Emily Guerrero kicks off the month with a two-week residency at the museum. Listen as Emily shares stories about monarch butterflies, corn and cacao at 1 and 3 p.m. on Friday, Oct. 7, or chat with her and learn more about her work and process during one of her open studios, on Oct. 8 and 11 from 1 to 4 p.m.

Beautiful community-created altars, or *ofrendas*, take center stage in the *Día de Muertos* Community Art and Altar exhibit, open and free to visit during regular museum hours Oct. 10 through Nov. 4. Featured favorites include altars by the Consulado de México en Indianapolis, the Indianapolis Central Library, Mujeres Conectadas en Indy, Christ Church Cathedral and others. Come in, spend some time with each of these intricate works of art and add a note for your own departed

loved one to the community *ofrenda*. Enjoy a Calacas exhibition curated by Mexico City-based illustrator Daniela Martín del Campo.

The culmination of the monthlong celebration is a full day of free programming during the *Día de Muertos* Community Celebration on Saturday, Oct. 29. Join us at the museum from 10 a.m. until 7 p.m. for an action-packed day of performances, artists, art-making activities, a Mercado (marketplace) and Catrinas (elaborately dressed and painted models inspired by José Posada's iconic print *La Calavera Catrina*).

Performance highlights include Son Monarcas from Chicago, Marvin Urroz, Sones de México Folklore Academy, Ballet Folklórico Mosaicos, Mariachi Sol Jalisciense, Metzli Cultural, Grupo Folclórico Macehuani, and much more.

For more information about the art and events, visit Eiteljorg.org/DayoftheDead.

File images from the 2021 *Día de Muertos* Community Celebration, presented with Arte Mexicano en Indiana, at the Eiteljorg.



VISTA PREVIA DEL EVENTO ESPECIAL

La celebración sin costo del Día de Muertos reúne a la comunidad

Spanish translation by Felix J. Medina

Hace casi una década, el socio comunitario Nopal Cultural se puso en contacto para conversar sobre la fusión de dos programas muy diferentes del Día de Muertos: el programa sabatino del Museo Eiteljorg, con grupos y artistas invitados, y el evento nocturno Nopal Cultural centrado en un desfile de moda de la Catrina. En aquella reunión inicial, ninguno de los socios podía imaginar cómo crecería el programa y se convertiría en el verdadero espectáculo comunitario en el que se ha convertido. Ahora, con nuevos socios comunitarios en la mezcla y Arte Mexicano en Indiana, el programa del Día de Muertos de este año en el Eiteljorg promete ser más grande y mejor que nunca.

Qué es el Día de Muertos?

Con raíces que se remontan a miles de años de tradiciones indígenas en México, esta fiesta es un momento para reunirse, recordar y celebrar a los amigos y familiares que han fallecido. El Día de Muertos, también llamado Day of the Dead, ha evolucionado hasta convertirse en una fiesta

diversa, que se celebra no sólo en México, sino también en Estados Unidos y en muchos otros países.

Oportunidades durante todo el mes de octubre

La cuentacuentos y artista de montaje Emily Guerrero inicia el mes con una estancia de dos semanas en el museo. Escucha cómo Emily comparte historias sobre las mariposas monarcas, el maíz y el cacao, a la 1 y a las 3 p.m. el Viernes 7 de octubre, o charla con ella y aprende más acerca de su trabajo y proceso durante uno de sus estudios los días 8 y 11 de octubre, de 1 a 4 p.m.

Los hermosos altares u ofrendas, creados por la comunidad, son el centro de atención de la exhibición de Arte y Altares, abierta y gratuita durante el horario habitual del museo, del 10 de octubre al 4 de noviembre. Los altares favoritos incluyen algunos del Consulado de México en Indianápolis, la Biblioteca Central de Indianápolis, Mujeres Conectadas en Indy, Christ Church Cathedral y otros. Entra, pasa un rato con cada una de estas complejas obras de arte y añade una nota

a la ofrenda de la comunidad para tu ser querido fallecido. Disfruta de una exposición de Calacas organizada por la ilustradora de la Ciudad de México Daniela Martín del Campo.

La culminación de la celebración de todo un mes será con el Día de Muertos, sábado 29 de octubre, el cual es un día completo de programación gratuita. Únete a nosotros en el museo desde las 10 a.m. hasta las 7 p.m. para un día repleto de actuaciones, artistas, actividades artísticas, un Mercado y Catrinas (modelos vestidos y pintados detalladamente, e inspirados en La Calavera Catrina, del icónico grabado de José Posada).

Entre las actuaciones más destacadas se encuentran Son Monarcas de Chicago, Marvin Urroz, Sones de México de la Academia Folklore, Ballet Folklórico Mosaicos, Mariachi Sol Jalisciense, Metzli Cultural, Grupo Folclórico Macehuani y muchos más.

Para más información sobre el arte y los eventos, visite Eiteljorg.org/DiaDeMuertos.

Updates for Museum Members

By Jennifer Hiatt, membership and donor relations manager

Stay Connected

Are you receiving the Eiteljorg e-newsletter? This weekly email spotlights upcoming events and programs. It also includes updates about the museum that you won't want to miss.

We want to ensure that you as a museum member are the first to know about important museum news, exclusive offers and member-only benefits.

To receive the weekly newsletter and special messages and stay informed, send your email address or other contact updates to jhiatt@eiteljorg.com. Please note that we will never share your personal information.

Thanks for staying connected! Have you dropped your home landline or changed your contact information? Let us know if

we need to update your record with a new telephone number, address or email. And, if you have a seasonal address and want to receive your *Storyteller* magazine year-round, we can take note of this, so you never miss an issue.

Gift Memberships

Thinking about your holiday checklist? Consider giving an Eiteljorg Museum membership this holiday season. Friends and family will enjoy a year of great benefits, including free admission, discounts at the museum store and café, and discounted or free entry to events and programs.

Members also enjoy invitations to members-only activities, such as our Coffee & Conversation gatherings or Inside Look events featuring a wide range of speakers, artists and expert museum staff members. Children will enjoy the Nina Mason Pulliam Education Center, which includes the R.B. Annis Western Family Experience. The center offers immersive spaces for hours of play, discovery and creativity that unlock imaginations and foster learning for all ages.

Memberships make the perfect stocking stuffers. To purchase a gift membership, visit Eiteljorg.org/membership, call 317.275.1360, or e-mail jhiatt@eiteljorg.com.

PROJECT 2021: ONGOING

With the help of supporters such as you, the Eiteljorg Museum is close to reaching its fundraising goal for *Project 2021*, the \$55 million capital/endowment campaign that began in 2016. Gifts in the form of cash and future planned gifts total more than \$40 million to support the museum's operating endowment. The generosity of members, friends, donors, corporate partners and foundations has allowed the museum to complete major construction and renovation projects on time. Due to supply chain and labor cost issues, financial support still is needed to address remaining expenses; visit [Eiteljorg.org/Project2021](https://www.eiteljorg.org/Project2021) to donate.

Project 2021 in the news

The Indianapolis Star

"Inside Eiteljorg's Native American Galleries"

June 24, 2022

<https://bit.ly/3q2z6tJ>

Indianapolis Business Journal

"Updated Eiteljorg galleries reframe the context of Native art"

June 30, 2022

<https://bit.ly/3TvTPnv>

Great Lakes By Design magazine

"Expressions of Life"

July 2022

<https://bit.ly/3TAsYXj>

In addition to reinstalling the museum's Western art galleries in 2018, *Project 2021* included these recent capital projects:

NATIVE AMERICAN GALLERIES: RECONSTRUCTION AND REINSTALLATION COMPLETED

By Bryan Corbin, *Storyteller* magazine editor

The museum's reimagined Native American Galleries, featuring the exhibition *Expressions of Life: Native Art in North America*, opened to public acclaim on June 25, coinciding with the 30th annual Indian Market and Festival. The stunning new galleries contain a space for Native peoples to be the authority of their own stories. Beadwork, textiles, pottery, jewelry, weavings, carvings, paintings, sculpture, glass and contemporary art from the U.S. and Canada are interpreted through Native perspectives.

Beginning at its entrance with a land acknowledgment to those Native groups who call or called Indiana home, the exhibition is organized around the themes of



Glass art, pottery, jewelry, weavings, textiles, carvings and paintings are among the beautiful artworks in the Eiteljorg's new Native American Galleries, above and right.

Relation, Continuation and Innovation, concepts that many Native cultures have in common, noted Dorene Red Cloud (Oglala Lakota), curator of Native American art.

"Relation is about Native peoples' relation to spirit,

animal, plant, and to one another as a community, as a family and nation. These distinct philosophies and spiritual beliefs are important to relay to our visitors as they are fundamental in understanding how Native peoples relate to the world," Red Cloud said.

"Continuation acknowledges that despite the U.S. and Canadian governments' efforts to assimilate and acculturate them, Native peoples still uphold their artistic practices, spiritual beliefs or religious practices and Native languages. Some of these observances may have been interrupted or are on pause, but many of them still persist and will continue to do so in the future," she said.

"Innovation is a celebration of Native art and its nuances,



During the grand opening ceremony for the museum's new Native American Galleries on June 23, Eiteljorg President and CEO John Vanausdall, left, presented Pendleton blankets to leaders of Native American groups who call or called Indiana home, members of the museum's Native American Advisory Council and two curators who worked on the project.

Image courtesy of Hadley Fruits Photography

Native American Gallery Reconstruction and Reinstallation Sponsors:

Allen Whitehill Clowes Charitable Foundation

The Indianapolis Foundation

Lilly Endowment Inc.

National Endowment for the Arts

National Endowment for the Humanities

Netherleigh Fund, a Central Indiana Community Foundation Fund

Nicholas H. Noyes, Jr. Memorial Foundation, Inc.

Nina Mason Pulliam Charitable Trust

Terra Foundation for American Art

Ann W. King

Steve and Jane Marmon

Charlotte Mittler

Bill and Roberta Witchger



its inventions and inventive-ness and its unending possibilities. Since always, Native artists have refreshed tradition by pushing artistic mediums beyond ordinary limits. Native art from hundreds of years ago was contemporary at that time, and art hundreds of years from now will still contain traditional elements," Red Cloud added.

The museum's Native American Advisory Council was involved throughout the exhibit-planning process, working with curators and exhibition designers over several years as the new galleries were planned and developed. One of the galleries is focused on the subject of "Connected by Water," highlighting Native artists of the Great Lakes and surrounding areas, and includes art the museum acquired through a \$2.83 million Lilly Endowment Inc. grant. Throughout the galleries, all-glass cases, digital touchscreen displays, touchable activities and educational carts for gallery-guide presentations make the new space accessible for different ages and learning styles. On Indigenous Peoples' Day, Oct. 10, there will be a curator-led tour of the new galleries; see page 12 for details.

In a related project, an online hub of educational resources about Native peoples of the Great Lakes will be available soon at Eiteljorg.org, including downloadable lessons for educators and parents that are geared toward learners of different ages.

ALLEN WHITEHILL CLOWES SCULPTURE COURT: EXPANSION COMPLETED

The museum's beautifully expanded multipurpose facility has reopened after a summer construction project and is ready to host special events. The Allen Whitehill Clowes Sculpture Court features skylights and an all-glass wall with a spectacular view of the Indiana Statehouse. The elegant round room is the site of popular museum events, such as the Indian Market and Festival artists' booths, *Día de Muertos* activities, guest speakers, gala dinners and the *Jingle Rails* holiday model railroad.

Clowes Sculpture Court also can be rented by clients for private events, such as wedding receptions, corporate seminars and class reunions. The expansion under *Project 2021* increased the table seating capacity to 375, allowing the Eiteljorg to host larger events. Enclosing the OneAmerica Terrace and relocating the east wall overlooking West Street created the additional

floorpace. Architect Jonathan Hess of Browning Day, who designed the Eiteljorg's 1989 original building and 2005 expansion, returned to design the 2022 sculpture court expansion, part of *Project 2021*. The Allen Whitehill Clowes Charitable Foundation generously awarded \$1 million to the project, and many individuals also provided support.

Make an impression at your next occasion; visit Eiteljorg.org/event-spaces to rent the Allen Whitehill Clowes Sculpture Court, or contact Holly Hill-Brooks at hhill-brooks@eiteljorg.com or 317.275.1329.

Major support for the Allen Whitehill Clowes Sculpture Court expansion provided by:

Anonymous
Allen Whitehill Clowes Charitable Foundation
Stan and Sandy Hurt

Additional support provided by:

Phyllis and Ed* Cockerill
Garmon Construction Services
Patty and Tom Gibbs
Ralph Nowak

*Deceased



The Eiteljorg's newly expanded multipurpose facility, the Allen Whitehill Clowes Sculpture Court, is a visually impressive room that can be reserved for private events such as wedding receptions.

Image courtesy of Brittany Erwin



NINA MASON PULLIAM EDUCATION CENTER: RENOVATION COMPLETED

Since it reopened in November 2021, the museum's newly renovated family discovery area on the canal level has been a big hit with children and their parents, grandparents and caregivers. The Nina Mason Pulliam Education Center, featuring the R.B. Annis Western Family Experience, includes child-sized touchable exhibits about five diverse families of the contemporary West. Joining the popular exhibits about the families who created the Legend of Wasco Totem Pole and Concord Stagecoach are dynamic play environments featuring the Wisdom's Café Mexican restaurant, the Morrison family's horse ranch and Ms. Shew's elementary classroom. After a day of touring artworks upstairs, children enjoy expending their energy in the education center as well as leading their grownups in learning.

Inside the Cagle Family Gateway to Learning, Eiteljorg visitors will find digital jigsaw puzzles, children's books and other activities in the Stephen and Sharon Zimmerman Resource Center, which also includes the TCU and Dr. Ann H. Hunt Studios and Watanabe Family Library. The renovated space now includes a nursing room and quiet room.

Significant gifts to *Project 2021* from the R.B. Annis Educational Foundation, Steve Cagle and Drs. Richard and Rebecca Feldman helped make the education center renovation possible.

Planning for the Eiteljorg's future: John Vanausdall looks back at accomplishments, looks ahead

By Bryan Corbin, *Storyteller* magazine editor

After serving for 26 years as president and CEO of the Eiteljorg Museum of American Indians and Western Art, John Vanausdall will retire June 30, 2023, he announced recently.

Vanausdall, 66, has led the Eiteljorg Museum through unprecedented growth in its collections, exhibitions and public programming, enabled by expansion and renovation of the museum building and growth of the operating endowment. During his tenure, the Eiteljorg developed a national reputation for excellence in its Native American art and art of the American West, with a special emphasis on contemporary expressions of both. The museum has forged deep working relationships with artists, scholars and Native American leaders and culture bearers. And, the museum has nurtured the support of donors in greater Indianapolis

and across the nation.

"I am tremendously proud of all the staff, board and community have accomplished together to help the Eiteljorg maximize its impact locally, regionally and nationally," Vanausdall said. "Now, timing is perfect for new leadership to take the helm and navigate the museum into the mid-2020s and beyond."

This is a long-planned change. An executive committee of the Eiteljorg Board of Directors conducted a national search for the best firm to partner with the museum to identify potential candidates to lead the Eiteljorg. That committee selected Bridge Partners, LLC, a minority- and woman-owned business that specializes in the arts and cultural space and has a track record of identifying top potential leaders, including diverse candidates. Bridge Partners and the search committee



John Vanausdall will retire as Eiteljorg president and CEO in June 2023.
Image by Casey Cronin

mapped out a timeline in which Vanausdall's successor will be announced in the first quarter of 2023 and in place by the time he steps down.

"There are not enough superlatives for this board, or all the members of 26 years of Eiteljorg boards, to fully express our gratitude to John Vanausdall for what he has done for the museum," Eiteljorg Board Chair Pat Anker said. "Although he has always been reluctant to acknowledge his contributions to the museum's successes, John has been the significant driver. He has clearly been a stellar leader, but John is also an extraordinary person and friend. He has built a great past and present for our beloved museum. Our challenge will be to find someone who can help us build an equally great future."

Building on successes

Among the highlights of Vanausdall's tenure as president and CEO are:

- The \$55 million *Project 2021* capital/endowment campaign, which involved raising \$40 million in cash and pledges for the museum's endowment;

reimagining and reconstructing the Native American and Western art galleries; renovating the children's discovery area, the Nina Mason Pulliam Education Center; and expanding the multipurpose facility, the Allen Whitehill Clowes Sculpture Court.

- An earlier project, the completion of the museum's \$20 million Mel and Joan Perelman Wing in 2005, that doubled the Eiteljorg's public space.
- Major growth in the museum's collections of Native American art (including contemporary and customary art) and Western American art through important acquisitions — such as donations and bequests from art collectors — that built upon the original collection of museum founder Harrison Eiteljorg.
- Expansion of the museum's culturally significant initiatives that attract new or diverse audiences and groups, including the biennial Eiteljorg Contemporary Art Fellowship and several annual events: the Indian Market and Festival, the Juneteenth and *Día de*



On June 23, John Vanausdall, center, with scissors, was joined by Native American leaders and members of the museum's Native American Advisory Council to ceremonially cut the blue ribbon and open the new Native American Galleries.
Image by Hadley Fruits Photography

Muertos community celebrations, the *Quest for the West*® Art Show and Sale, and *Jingle Rails: The Great Western Adventure*.

- Developing the museum's financial support base through private philanthropy, donor relations and corporate sponsorships, which allowed the Eiteljorg to meet its obligations during the pandemic-shortened year of 2020 and quickly bounce back.
- Emphasizing a commitment to diversity, equity, accessibility and inclusion, through implementing the museum's new DEAI plan as part of its next five-year strategic plan.

Looking forward

Vanausdall joined the Eiteljorg in October 1996 after 18 years in both the creative and management areas of The Children's Museum of Indianapolis. He earned a BS in education in 1978 and an MBA in 1996, both from Indiana University. In 1989, he attended the Museum Management Institute in Berkeley, California, a program of The American Federation of the Arts and The Getty Trust.

Vanausdall will remain on the job as Eiteljorg president and CEO through next June and will assist in the transition to a successor selected through the national search process.

"For my part, I am looking forward to spending time in retirement with family and friends, traveling and finding new ways to be of service to others," Vanausdall said. "I am tremendously excited for the future of the Eiteljorg Museum and the opportunities awaiting it."

A public celebration marking John Vanausdall's retirement is planned for May 13, 2023.



Estate plans among the many ways to help museum

As the Eiteljorg Museum's capital/endowment campaign, *Project 2021*, comes to a close, I would be remiss if I didn't thank all of you again. We could not do all the things you read about in the *Storyteller* magazine without you!

However, we are not done yet....

One thing is clear: The museum's endowment must continue to grow to sustain the good work we do. Although it is smaller than we would like, the endowment helped the Eiteljorg through 2020 and 2021 during the heights of the pandemic. It continues to provide aid while supply chains are unreliable, labor costs rise, and the uncertainty of the economy causes households to be more cautious with their discretionary spending.

This is where your trust and belief in the future of the Eiteljorg becomes important and invaluable. Please consider leaving a legacy by including the museum in your estate plans.

Q: How can I support the museum's endowment?

A: There are many ways:

- Cash and stock gifts designated for the endowment

are for people who feel they have the resources to do something now, during their lifetime. It's a great way to see your legacy in action.

- Designating the museum as a beneficiary of your IRA or 401k.
- Designating the museum as a beneficiary of a life insurance policy or trust fund.
- Naming the museum as a beneficiary of your donor advised fund or family foundation.

Q: I have established a Donor Advised Fund (DAF) at my financial institution or community foundation. Can I leave the money from that fund to the museum upon my passing?

A: Yes. Speak with the managers of your DAF. You have the ability to designate where the money goes after you pass on. If you do not designate a person or entity, that money traditionally would go to the institution where you have established the fund.

Q: I have put the Eiteljorg Museum into my estate plans through my financial advisor and/or my estate attorney. What now?

A: Please contact me and let me know the good news. It

is important we understand what is significant to you. We also want to recognize you now by becoming a part of the Harrison Eiteljorg Society. This Society acknowledges people who have remembered the museum in their estate plans upon their passing. The Society is ramping back up following the completion of *Project 2021*, so look for more information coming in 2023.

With your help, the Eiteljorg Museum has reached many milestones. The groundwork has been laid throughout the last 33 years, and we are embarking on the next five-year strategic plan, currently in the development phase. We would like you to be a part of our future!

Call or email me with any questions. I am always happy to help.

Nataly Lowder

Vice President for Advancement
317.275.1311

nlowder@eiteljorg.com

Eiteljorg Museum
500 W. Washington St.
Indianapolis, IN 46204

Eiteljorg.org/Project2021

Calendar

Calendar of Events compiled by Brooke Sullivan

NOTE TO VISITORS: The events and dates listed here were in effect at the time of publication. At different times, an individual gallery may be temporarily closed for reinstallation even as the museum remains open. Please check Eiteljorg.org before your visit for the most up-to-date information on exhibits and activities at the museum on the day of your visit and to register for programs.



Saturday

OCT 1

9-10 a.m.: members' event
10 a.m.-noon: quill stitch workshop

Coffee & Conversation with Monica Raphael

Enjoy a members-only event with artist in residence Monica Raphael (Anishinaabe / Sičánŋu Lakota). Members will receive a discount for the quill stitch workshop that directly follows the conversation. Registration required. For more information visit Eiteljorg.org/events or to register, contact Jennifer Hiatt at jhiatt@eiteljorg.com.



Image by Hadley Fruits Photography

Monday

OCT 10

Noon

Indigenous Peoples' Day Tour

In honor of Indigenous Peoples' Day, join Curator of Native American Art Dorene Red Cloud (Oglala Lakota) for a tour focused on Native American and First Nations art in the new exhibit, *Expressions of Life: Native Art in North America*.



DÍA DE MUERTOS

Saturday

OCT 29

10 a.m.-7 p.m.

Día de Muertos Community Celebration

Celebrate *Día de Muertos*/Day of the Dead at the Eiteljorg with partners Arte Mexicano en Indiana and Nopal Cultural. Enjoy FREE admission to the museum. Come learn the history behind the holiday, enjoy performances, meet artists and watch demonstrations, explore artwork, support local artists and vendors while shopping in the Mercado, and create art. Meet artist in residence Richard Gabriel. Visit Eiteljorg.org/diademuertos or Eiteljorg.org/dayofthedeath for more details. See story on page 6.



OCT 10-NOV 4

Día de Muertos Community Art and Ofrenda Exhibition

Explore elaborate and beautiful *ofrendas*, or altars, designed by local organizations and artists to honor and celebrate deceased loved ones. Add a note or photo to the community *ofrenda*, and enjoy a Calacas exhibition curated by Mexico City-based illustrator Daniela Martín del Campo. The exhibition is free to visit during regular museum hours.



ARTISTS IN RESIDENCE

OCT 3-15

Emily Guerrero

Mexica-Arts founder Emily J. Guerrero is a storyteller and folk artist of Mexica Indigenous ancestry. Emily embodies her ancestral traditions as she encourages and inspires audiences to expand their knowledge of diverse cultures. Meet Emily and learn about her art and culture during her virtual artist talk, open studio, storytelling and workshop sessions.



OCT 24-29

Richard Gabriel

Richard Gabriel resides and has a studio in Tijeras, New Mexico where he creates traditional Spanish Colonial tinwork. Richard is also a painter and sometimes uses his paintings in his tinwork. He teaches tinsmithing at Santa Fe Community College. Join Richard for an artist talk and member workshop. He also will meet with the public on Oct. 29 during the free celebration of *Día de Muertos*.



NOV 1-21

Karen Ann Hoffman

Karen Ann Hoffman (Oneida of Wisconsin / Haudenosaunee) creates beautiful decorative pieces following the traditions of Iroquois Raised Beadwork. Karen Ann's award-winning beadwork has been displayed across the country. Meet Karen Ann and learn more about her art and culture during a virtual artist talk, open studio and workshop sessions.



Visit Eiteljorg.org/events for full artist-in-residence details.

We're adding new programs and events all the time. Visit Eiteljorg.org and sign up for our e-newsletter to stay up to date on museum happenings. Visit Eiteljorg.org for details or call 317.636.9378 to register or purchase event tickets. All events are included with general admission unless otherwise noted. General admission is \$18 for adults, \$14 for seniors 65 and over, and \$10 for youth ages 5 to 17 and college students with student ID. Children ages 4 and under are free. Museum members enjoy free admission, unless otherwise noted. The museum can validate parking in the White River State Park underground garage, while spaces are available, for visitors to the museum, café or museum store.

Nicolai Ivanovich Fechin (American (born Russia), 1881-1955)
Horses in Snow, oil on canvas
 20 1/4 x 30 1/4 x 1 1/2 inches
 Eiteljorg Museum of American Indians and Western Art
 Gift of Harrison Eiteljorg. 1989.2.87



Saturday
NOV 5

Snow Days Opens

A temporary exhibition showcasing artwork from the Eiteljorg permanent collection, *Snow Days* is centered on the theme of winter. Featuring beautiful paintings, pottery, drawings, textiles and other works of art, *Snow Days* continues through Feb. 5, 2023. After you see it, visit *Jingle Rails*. See story on page 2.

Pahponee (Kansas Kickapoo Tribe / Citizen Potawatomi Nation, born 1958)
Wintertime, 1998
 Incised pit-fired clay, 5 1/2 x 14 x 14 inches
 Eiteljorg Museum of American Indians and Western Art
 Gift of Michael and Juanita Eagle. 2018.1.19



Thursday
NOV 10
 6:30 p.m.

Spirit & Place Event Inking Identity: Indigenous Tattoo Practices

Join local tattoo artist and activist Stephanie Big Eagle (Lakota/Dakota) who will talk about the traditional Indigenous practice of hand-poked tattooing and discuss how both tattooing and the tattoo itself shape and reflect cultural identity. Pre-registration at Eiteljorg.org/events is strongly encouraged.

This event is presented in partnership with Purdue University NAECC and the Indiana Native American Indian Affairs Commission and is part of the Spirit & Place Festival.



Friday and Saturday
NOV 25 & 26

Thanksgiving weekend programming

Meet talented Native artists Katrina Mitten (Miami Tribe of Oklahoma) and JJ Otero (Diné). Watch demonstrations, learn about Native beadwork and jewelry traditions and enjoy the holiday favorite, *Jingle Rails*.



**NOV 19, 2022-
 JAN 16, 2023**

Fifth Third Bank Jingle Rails: The Great Western Adventure

Experience the American West in a unique and festive way at the Eiteljorg Museum. *Jingle Rails*, one of Indy's favorite holiday attractions, returns for a 13th year. Reserve tickets online at Eiteljorg.org/JingleRails. See story on page 4.

Saturday
NOV 19
 8-10 a.m.

Members-only First Look at Jingle Rails

Members are invited to a free, exclusive first look at *Jingle Rails* on opening day. Our youngest members will enjoy holiday activities. For more information or to register, contact Jennifer Hiatt at 317.275.1360 or email jhiatt@eiteljorg.com.

Thursday
DEC 1
 5:30-7 p.m.

Members-only Adults' Night Out

Get your holiday shopping underway at a special members-only evening event featuring gently-used, unique art-inspired items, donated by an anonymous friend of the museum. From dolls to woven rugs to baskets and framed art, you're sure to find that one-of-a-kind gift for the Native American art and Western art enthusiasts on your list. *Jingle Rails* and the entire museum will be open to members who register. For more information or to register for this free members-only event, contact Jennifer Hiatt at 317.275.1360 or email jhiatt@eiteljorg.com.

Friday
DEC 16
 5:30-8 p.m.

Jingle Rails Eagle Society Family night

Eagle Society members and their families are invited to an exclusive evening to explore and share the magic of *Jingle Rails*. Children and their grownups will enjoy the Nina Mason Pulliam Education Center, where they can immerse themselves through play and discovery in the stories of five families. For more information or to register for this free Eagle Society members-only event, contact Jennifer Hiatt at 317.275.1360 or email jhiatt@eiteljorg.com.



WESTERN BOOK CLUB

Join us via Zoom for a virtual discussion on books that represent the diversity of the American West and Indigenous peoples of North America. Visit Eiteljorg.org/events to register for an upcoming discussion.

NOV 9 6:30 p.m. | *Riders of the Purple Sage* by Zane Grey
JAN 11 6:30 p.m. | *Fools Crow* by James Welch

Continued on next page

Continued from previous page

The Eiteljorg will host three **Jingle Rails** art-making workshops. To register, visit Eiteljorg.org/events. There is a fee for each workshop.

Saturday, 1 p.m.

DEC 3

Moose Hot Chocolate Cones Workshops

Take some time to explore the *Jingle Rails* exhibit and then join us in the museum's studios to learn about the animals that populate the Western landscape and make a moose (or elk) hot chocolate cone to take home with you.

Saturday, 1 p.m.

DEC 10 Snow Globe Workshop

Get inspired by the *Snow Days* exhibition and *Jingle Rails* display and then bring your inspiration to the museum's studios to create a snowy train scene for your own snow globe.

Saturday, 1 p.m.

DEC 17 Paint a Train Workshop

Take a tour of *Jingle Rails* and then join us in the studios to paint a wooden model train inspired by the trains that populated the Western railways.



FIFTH THIRD BANK

Monday

JAN 16

10 a.m.-5 p.m.

Martin Luther King Jr. Day

Enjoy FREE admission to the Eiteljorg Museum in honor of Martin Luther King Jr. Day. This is the final date this season to experience *Jingle Rails: The Great Western Adventure*. Visit Eiteljorg.org/events for details.



Allison Evans

Friday

FEB 3

Noon

Behind the Scenes Talk: Object Loans

Join Director of Museum Collections Allison Evans to learn about how object loans work in the museum field and at the Eiteljorg. This program is included with general museum admission.

Thursday

FEB 16

6:30 p.m.

Leon Jett Memorial Lecture with Kyle T. Mays

Join Kyle T. Mays, author of *Hip Hop Beats, Indigenous Rhymes: Modernity and Hip Hop in Indigenous North America*, for an important discussion about hip-hop music by Native artists. The Leon Jett Memorial Lecture Series is named for the Eiteljorg's former manager of public programs who sought to elevate multicultural programming at the museum. Check Eiteljorg.org/events for reservations and details.

CONTINUING EXHIBITIONS



Visitors enjoy the new Native American Galleries, part of Project 2021. Image by Hadley Fruits Photography

ONGOING

Expressions of Life: Native Art in North America

A new exhibition in the museum's reimagined Native American Galleries features beautiful and compelling Native artworks from across the U.S. and Canada. Exploring the themes of Relation, Continuation and Innovation, the exhibition includes a special focus on Native art of the Great Lakes region. See story on page 8.



Truman Lowe (Ho-Chunk, 1944-2019) *Orange Canoe on Blue Water*, 1998. Chalk and crayon on paper. 1999 Eiteljorg Fellow. Collection of the Eiteljorg Museum, Museum purchase from the Eiteljorg Fellowship for Native American Fine Art with funds provided by Stan and Sandy Hurt. 1999.6.3

THROUGH JUL 3, 2023

Contemporary Native Art 101

Sponsored by Faegre Drinker
This exhibition in the Hurt and Harvey Galleries is a visual review of contemporary Native art from the 20th century to today, focusing on its developments in painting, sculpture, prints, and multimedia.



Eiteljorg
FRANK AND KATRINA BASILE
Museum Store

BEAUTIFUL NATIVE AMERICAN JEWELRY AND ART

Visit the newly refreshed and reorganized Museum Store, where you can find the best in Southwestern jewelry and pottery, as well as art catalogs, books about Native Americans and the American West, cookbooks and accessories, plus decorative items related to Day of the Dead and *Jingle Rails*. Find something unique for that hard-to-shop-for person on your holiday list. To shop online, visit Eiteljorg.org/visit/shop.

STORE HOURS

MON-SAT: 10 a.m. to 5 p.m.

SUN: Noon to 5 p.m.

317.275.1300 | 800.878.7978

store@eiteljorg.com

[@Eiteljorg.Store](https://twitter.com/Eiteljorg.Store)

IN MEMORIAM

Margaret Rapp, 1934-2022

Margaret "Peggy" Rapp's dedication to Hoosier arts organizations and her family are cornerstones of her legacy. An Eiteljorg Museum member from the museum's beginning in 1989, Peggy and her husband Dr. George Rapp supported the Eiteljorg with memberships that advanced to Eagle Society and higher levels over a period of 32 years. Peggy and George were *Eye on the Future* capital campaign donors, and their gift was among those that helped the museum double in size in 2005.

Peggy Rapp's warm support of the Eiteljorg extended to networking. Whenever Eiteljorg executives traveled to Florida to visit friends of the museum, Peggy and George graciously hosted them in their Sanibel home. "Giving of her time, her home and her friendship, she was always brainstorming on people she should introduce us to. Anyone she thought would enjoy the mission of the museum became a possible new friend," Eiteljorg Vice President for Advancement Nataly Lowder said.

Peggy's talents and support also were shared with other Hoosier organizations: the Indiana Historical Society, the Indianapolis Museum of Art (Newfields), The Children's Museum of Indianapolis, the Indianapolis Symphony Orchestra and the Heartland Film Festival, among others.

She championed historic projects in New Harmony, Indiana, helping preserve the site, and supported the New Harmony art community. She also pursued her love of gardening and flowers.

She received an honorary degree from the University of Southern Indiana and was named a "Living Legend" by the Indiana Historical Society. Her support of many Indiana University schools and departments earned her the President's Circle Laurel Pin.

"Peggy was a joyful person, a supporter of the arts in all its forms, and really, a supporter of humanity in every sense," Eiteljorg President and CEO John Vanausdall said.

Peggy Rapp died July 20, and the Eiteljorg Museum and staff send their deepest condolences to her husband of 66 years, two sons, grandchildren, great-grandchildren and many friends. A complete obituary is at this link: <https://bit.ly/3w9Msln>.



Margaret "Peggy" Rapp

Baxter Black, 1945-2022

Cowboy poet, philosopher and former large-animal veterinarian" were the titles that introduced Baxter Black during his frequent radio commentaries on NPR, but "friend of the Eiteljorg Museum" easily could have been another.

Black's humorous essays about life on the range, delivered in a twangy cadence straight out of a Western movie, delighted public radio listeners for decades. A columnist, author and in-demand public speaker, Black performed his unique brand of standup storytelling at three Eiteljorg events: in June 2005, October 2008 and October 2010.

With the museum's focus on Western art, history and culture, Baxter Black was a big hit with Eiteljorg supporters. The Stetson-wearing raconteur with the big droopy mustache regaled his audiences with wry observations about life, livestock and politics, cultivated from his upbringing in Las Cruces, New Mexico. Guests lined up to get his autograph on copies of his book.

Martha Hill, Ph.D., former vice president for public programs and Beeler family director of education at the Eiteljorg, recalled the impact Black had in many arenas.

"In addition to performing, Baxter was an advocate for agriculture across the U.S., supporting 4-H and Future Farmers of America to encourage youth interested in living a farming lifestyle. We first met him when he came, pro bono, to the Purdue Veterinary College to entertain the students and encourage those interested in animal agriculture," Hill said. "Engaging him at the Eiteljorg was a natural extension of this early friendship as his poetry and stories about Western life were a perfect fit for the museum. Baxter's generous spirit and kindness to our family, both at the Eiteljorg and on visits to his and Cindy Lou's ranch in Benson, Arizona, are fondly remembered by us all."

Hanging up his entertainer's spurs last year, Black retired to his Arizona ranch. He died June 10 at age 77, and the Eiteljorg Museum extends its deepest condolences to his wife Cindy Lou and family. A complete obituary is at this link: <https://n.pr/3zZSb5D>.

Frequently asked "What made you decide to be a cowboy?", Baxter Black answered: "You either are one, or you aren't. You never have to decide."



Baxter Black with Blue
Photo by Gary Gainer with
the Tucson Citizen

MEMBERSHIPS AND DONATIONS

Thank you to the following donors for memberships and gifts received April 1 to July 31, 2022

Due to space limitations, only contributions of \$100 or more are listed, with the exception of gifts in honor or in memory. If your name is not listed as you would like it, please accept our apologies and call 317.275.1360.

Membership gifts (\$125 and above)

Vision Circle

\$25,000 and above
Steve Cagle
L.G. and Alyce Edwards
Hil Raab, Jr.
Cathy Turner

Chairperson's Circle

\$10,000-\$24,999
Pat and Bob Anker
Gordon Gund
Joan Perelman

President's Society

\$5,000-\$9,999
Anonymous
Tom and Patty Gibbs
Ann M. Stack
Marion Wolen

Golden Eagle Society

\$2,500-\$4,999
Tom and Dawn Bennett
Phyllis Cockerill
Charles and Helen Coghlan
Michael Khalil
Jay and Sally Peacock
Dr. Newell O. Pugh, Jr.
Dr. and Mrs. Randall G. Rowland
Robert and Barbara Shortle
The Namaste Foundation

Eagle Society

\$1,500-\$2,499
Neal and Jenai Brackett
Benjamin and Amy Cox
Jon and Kathy Dingler
Jane S. Farber
Delores Muller
Kay Pauszek
Margaret E. Piety and Josef F. Laposa
Amanda and Eric Rail
Mr. and Mrs. J. David Resley
Frannie Sing
Dr. and Mrs. Harry Staley
Oksana and Peter Withey

Advocate Members

\$1,000-\$1,499
Erin Dorsey
James and Sareta Gregory
Mr. and Mrs. William E. Stanley

Patron Members

\$500-\$999
Ted and Peggy Boehm
Patricia L. Crumley and
Eugene DeRamus
Douglas Hale and Meg Hardison
Susan Hoffert and Mark Wolanski
Leonard and Dorene Hoops
John and Christine Patten

Continued on next page

MEMBERSHIPS AND DONATIONS

Continued from previous page

Gail Plater and William M. Plater
Michael Quinn and Tony Fay
Steven and Andrea Richel

Sustaining Members \$250-\$499

Viki and Bruce Anderson
H. Dean and Donna Andrews
Amy Baum Goodwin
Raymonda Bell
John and Joann Birdzell
Patricia and Jesse Clark
Charles and Louise Gay
Dr. Joseph and Mrs. Eleanor Hingtgen
Susan and Mike Lewis
Bob Lucid
Joseph and Sharon Olson
Jose and Elizabeth Samperio Casco
Ann and Steve Smith
Jerry and Linda Stark
Stephanie Sweetana
Nicholas and Terry Watson
David and Joann Wehlage
James P. White

Contributing Members \$125-\$249

Robert D. Epstein
William Esarey and
Robin-Elizabeth Parsley
John and Nancy Farrar
Barbara Fisher
Dawn Fishman
Dale Fletcher and Janet Clegg
Parrish and Vernelle Galloway
Bruce and Marcia Gascho
Tom and Mary Grein
Jill Hagan and Ryan Hagan
Jo Ann and Nicholas Hatfield
Dr. Mark Heiden and
Dr. Mary Ellen Lennon
John H. Heiligenstein
Patricia Herron and
Russell Rumansoff
Patricia and Kenneth Hofmann
Marilyn Jones
Sandy and Greg MacAllister
Sean and Kathy Mayberry
Darby McCarty
Richard and Cheryl McDonald
Patricia S. Mohler
Franklin and Robin Newhouse
Michael and Brenda Noone
John and Laurie Paarlberg
Ben and Donna Pauley
Robin and Gregory Pemberton
Noreen and Alan Poorman
Robert and Martha Ravensberg
Robert and Janet Redmond
Julia Ritter
Dale and Mary Jo Roberts
James and Maureen Ross
Mr. Michael Sawyers
Marjorie and Karl Schnelle
Richard and Carol Schwartz
Daniel and Laura Shattuck
Theresia and Archey Shearer
Willa and Lon Shultz
Jennifer and Stephen Simms
Linda and Edward Simpson
Dr. Frederick B. Stehman and
Helen Stehman
Robert and Emily Thacker
Greg and Beth Thomas



During summer 2022, the Eiteljorg celebrated the opening of the new Native American Galleries. On June 25-26, nearly 4,000 people attended the 30th annual Eiteljorg Indian Market and Festival, in which 126 Native American artists participated. Among the performers was the Woodland Sky Native American Dance Company, left image. The museum also hosted four concerts in the Summer of Celebration Concert Series, including an Aug. 25 jam session, right image, with classical guitarist Gabriel Ayala (Pascua Yaqui), left, and blues-rockers Keith Secola (Anishinaabe), right. Both the market and concert series were presented by the Indiana Corn Marketing Council and the Indiana Soybean Alliance.

James T. and Victoria N. Thompson
Tonya Vachirasomboon and Isaac
Thompson
Patrice and John Waidner
Frank and Jane Walker
Ken Wherry
Thomas and Denise Wilson
Jessie and Jeremiah Wise
H. David and Jane Wright
Doug Yost and Kim Mathews
Mark and Debra Zwoyer

Donors

All memorial and honorarium gifts are listed. Gifts in other categories are for \$100 or more.

Annual Fund and other designated gifts

Anonymous (2)
Sarah C. Barney
Dr. and Mrs. Thomas A. Broadie
Joy and Dan Hess
Scott Putney and Susan Sawyer
Jim and Karen Wolf

Gifts in Honor and Memory

In honor of 2022 Kappa Alpha Theta Emerging Leaders Institute
Kappa Alpha Theta Fraternity
In honor of Burke Eiteljorg and Kylie Prusak
John Vanausdall

In honor of Nataly Lowder
Charles Katzenmeyer

In honor of Outgoing Board Chair L.G. Edwards

Mary Beth and Robert Braitman
Steve Cagle
Benjamin and Amy Cox
Roger and Mindy Eiteljorg
Drs. Richard and Becky Feldman
Patty and Thomas Gibbs
Karen and Joseph Glaser
Fred and Angie Green
Gloria Griesinger
Stan and Sandy Hurt
Chris Katterjohn and Dona Siebler

Benny and Vicky Ko
Nataly and Jonathan Lowder
Susie and Howard Maxwell
Virginia Merkel
John Vanausdall
Bill and Roberta Witchger

In memory of 8 Northern Pueblos of Northern New Mexico
Dr. Bernard J. Baca, Ph.D.

In memory of Cody Cole Blanton
Maryann and Chet Blanton

In memory of Margot Lacy Eccles
The Lacy Foundation — Lady Bug
Surprise

In memory of Nelson A. Lock
David and Susan Charlesworth

In memory of Phil Lowder and Robert Smith

Nataly and Jonathan Lowder
In memory of William M. Varanka

Anonymous
Heywood Adams
Ellen Cook
Fredia DeGray

Katja Geisler
Nataly and Jonathan Lowder

Jennifer Pavlus
Lora Peloquin

John Roederer
Mr. and Mrs. Eric Servaas

John Vanausdall
Alter Domus Trade Settlement Team
WHJE 91.3

Foundation, corporation and government gifts

\$85,000 and above
Lilly Endowment Inc.

\$20,000-\$84,999
Allen Whitehill Clowes Charitable
Foundation, Inc.

\$7,500-\$19,999
Ayres Foundation, Inc.
The Lacy Foundation
Nicholas H. Noyes, Jr. Memorial
Foundation, Inc.

\$1,000-\$7,499

Arthur Jordan Foundation
The Glick Family Foundation
Joanne W. Orr Charitable Fund
The Penrod Society

Matching gift companies

Capital Group
Eli Lilly and Company Foundation, Inc.
Lilly Endowment Inc.
SAFECO

Gifts in kind

El Venezolano
Faegre Drinker
Glodo's Original Kettle Corn
Honeymoon Image & Design
Kahn's Catering
Menefee Lemonade
Krystii Melaine
Platero Navajo Fry Bread and
Indian Tacos
Red Frazier Bison
SpringReef LLC
Stuart's Household Furniture Moving
and Storage, Inc.
Tourist Information Services
Viki Anderson LLC
Wyliepalooza Ice Cream

Frakenthaler Climate Initiative

Helen Frakenthaler Foundation, Inc.

2023 Leon Jett Memorial Lecture

Supported by:
Anonymous

Western Art Society

David and Gisele Found

Jingle Rails: The Great Western Adventure

Fifth Third Bank

Sponsored by
OneAmerica
Katz, Sapper & Miller
Indiana Soybean Alliance
Barnes & Thornburg LLP

Project 2021 capital campaign

Dick and Kathi Badertscher
 Don and Ginger Bievenour
 Leslie Bozeman
 Steve Cagle
 Chris and Kimberley Eck
 Kathryn Footit
 Kay Hinds
 Tamara and Chris Holmes
 Rita Kohn
 Brittany A. Manning
 Kelly and Stephan Masoncup
 K Mathews and D E Yost
 Millicent Moye, M.D.
 James O'Leary
 Donna and Hal Olsen
 Afshan and Adam Paarberg
 Dorit Paul
 Margaret E. Piety and Josef F. Laposa
 Hil Raab, Jr.
 Chris Reading and Juliet Port
 Sarah and Martyn Roberts
 Dr. and Mrs. Randall G. Rowland
 Michael and Kathleen Schneider
 The Honorable Randall Shepard and
 Amy MacDonell
 Michael P. Skehan
 Linda and Jerry Stark
 Cathy Turner
 Christina Williams
 Angela Wilson
 Marion Wolen
 Douglas E Yost
 Ackerman Foundation
 Garmon Construction Services
 Gannett/in honor of Frank E. and
 Nancy M. Russell
 National Endowment for the Arts

Gifts in Honor and Memory in support of Project 2021 capital campaign

In honor of the Lowder Family
 Christina Williams
In honor of Ralph Nowak
 The Honorable Randall Shepard and
 Amy MacDonell
In honor of Willa and Lon Shultz
 50th Wedding Anniversary
 Steve Cagle
In honor of 33 years of the opening and the teams since 1989, growing the Eiteljorg's vibrancy. In honor of John Vanausdall, president and CEO
 Rita Kohn
In memory of Vernon O. Church
 Kathryn Footit
In memory of Alen Dean Hinds
 Kay Hinds

Project 2021 capital campaign Fund a Project Initiative

Design a Flag:
 Dr. Bernard J. Baca, Ph.D.
 Mikel and Christie Donahue
 David and Susan Charlesworth
 CherylInn and Nicholas Schilling-Smith
Hands-on Carts:
 Anonymous (2)
 Pat and Bob Anker
 Julianne Dalrymple
 Kay Hinds
 Pam and Gary Jursik
 Dr. Joanne Martin
 Mark Saunders
In memory of Mark D. Dalrymple
 Julianne Dalrymple
Ledger Art Activity:
 Dan and Susan Bradford
Ledger Art Photo-op:
 Bruce and Lauri Kolb
Loom Activity:
 Dan and Susan Bradford
Please Touch Materials:
 Pat and Bob Anker
 Raymonda Bell
 Lowell Kane
 Joan SerVaas and Larry Roan
Create a Quilt Square:
 Pat and Bob Anker
 David Holets and Jennifer Light Holets
Map wall made possible by Eiteljorg guides:
 Don Bievenour
 Rosanne Bonjouklian
 Paul and Margarete Brandenburg
 Tom Bromstrup
 Carolyn Burkely
 Marilyn Dapper
 William E. Forehand, Jr.
 James and Lisa Harkness
 Larry and Connie Kane
 Kelly Masoncup
 Linda Mills
 Sharon Mills
In memory of Aphrodite Nicas by
 Thalia Nicas
 Donna Olsen
 Noreen Poorman
 Linda Robb
 Carol Saviano
 Sandy Schipp
 Diane G. Thompson
 Catherine Turner
 Pamela West
 Patti Wright

VOLUNTEER CORNER**Fall and winter volunteering opportunities await at Eiteljorg**

By Rachel Noll, volunteer coordinator

In May, I started as the new volunteer coordinator here at the Eiteljorg Museum. Taking over the role from my predecessor Jay Harkness has been a wonderful experience, given his support and guidance. For years, I have immersed myself in the world of nonprofits. It is an honor to be at such a prestigious cultural institution such as the Eiteljorg helping to manage some of the most dedicated and knowledgeable volunteers I've ever seen.

As a student at Indiana University Bloomington until my graduation in 2021, I was immersed in a service organization called Alpha Phi Omega that allowed me to explore many facets of the nonprofit sector. My time with them was cut short due to the pandemic, but I still managed to volunteer a total of 125 hours at five different nonprofits in central Indiana. Before starting my journey with the Eiteljorg Museum, I interned at Firefly Family Alliance and Indiana Donor Network here in Indianapolis.

Since the Eiteljorg Indian Market and Festival on June 25-26 took place just a month after I started, I had to get acclimated to the museum very quickly. More than 70 volunteers gave more than 240 hours of service time during the weekend. The dedication and willingness of Eiteljorg volunteers to help with the market let me see how special they are.

The Eiteljorg's next large upcoming event is the Fifth Third Bank *Jingle Rails: The Great Western Adventure*, Nov. 19-Jan. 16, and we will need large numbers of volunteers. *Jingle Rails* is a 10-week-long holiday model train exhibit that is run almost entirely by volunteers.

We realize how tough the last 2½ years have been, but with precautions in place and a safety-first mindset, we hope not only to re-engage volunteers who were affected by the pandemic, but also to recruit a new and diverse group of people to bring new faces to the museum. If you would like to volunteer with the Eiteljorg, please complete our volunteer application found at [Eiteljorg.org/give-and-join/volunteer](https://eiteljorg.org/give-and-join/volunteer), or email Rnoll@eiteljorg.com or call 317.275.1325.

Note: The museum's volunteer gallery guides serve important roles in interacting with visitors. If you are interested in becoming an Eiteljorg Guide, please contact us right away at the email above about joining the museum's annual training course, which already began Oct. 3. Classes meet Mondays 9 a.m. to 1 p.m. through Jan. 30, 2023, with breaks during the holidays, Dec. 26 and Jan. 2. There is a lot of content being covered, but still time to catch up.



Eiteljorg Volunteer Coordinator Rachel Noll is seen here with Wilson Hurley's 1991 triptych painting, *October Suite: Grand Canyon* in the museum's Western Art Galleries.

Learn about the tremendous progress the Eiteljorg Museum made in 2021. Read our 2021 annual report, *You Power Our Progress*, at <https://eiteljorg.org/board-and-annual-report/>



Eiteljorg Museum of American Indians and Western Art

White River State Park • 500 W. Washington St.
Indianapolis, IN 46204
www.eiteljorg.org

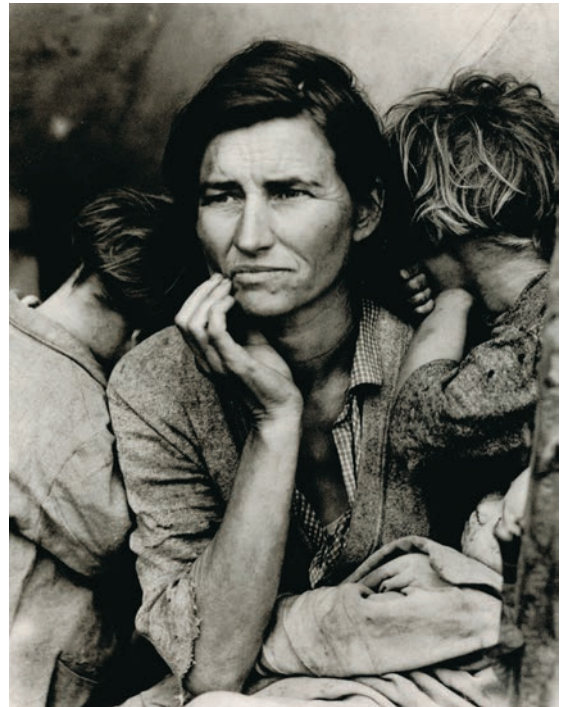
COMING IN THE FEBRUARY ISSUE

CHANGING VIEWS: THE PHOTOGRAPHY OF DOROTHEA LANGE **MARCH 4–AUG. 6, 2023**

The most iconic image of the Great Depression is *Migrant Mother*, a 1936 photograph of a family facing stark economic hardship in which the mother's weathered features convey both fear and determination. The photographer was Dorothea Lange, who — while working for a New Deal program — created documentary photographs, published nationwide, of people uprooted by the Depression. A traveling exhibition of 30 of Lange's memorable photographs is coming to the Eiteljorg in 2023. *Changing Views* showcases the efforts of Lange and her fellow photographers to awaken the nation's conscience during the 1930s. Organized by art2art Circulating Exhibition, this fascinating show also examines the work of today's contemporary photographers who make the case for social change through their images. It will feature compelling public programs.

Dorothea Lange (American, 1895-1965)
Migrant Mother, Nipomo, California, 1936
23 x 18 inches

All works are from the collection of
Michael Mattis and Judith Hochberg.
This exhibition was organized by
art2art Circulating Exhibition.



Sponsorships for Eiteljorg exhibits and programs are available. Contact Dave Wilson at 317.275.1333 or dwilson@eiteljorg.com.



Stay connected with the Eiteljorg on social media and at **Eiteljorg.org**.
You can also sign up for our weekly e-newsletter at Eiteljorg.org.

For general information about the Eiteljorg Museum, call **317.636.9378**.

